

PROPOSED RESIDENTIAL DEVELOPMENT

12-16 FRANCIS STREET, MINTO

STORMWATER CONCEPT DESIGN



LOCALITY PLAN
NOT TO SCALE
COPYRIGHT OF GOOGLE MAP, VERSION 3)

DRAWINGS LIST			
SHEET No.	DWG No.	TITLE	REV
1	SW100	COVER SHEET	D
2	SW200	STORMWATER CONCEPT DESIGN - BASEMENT PLAN	D
3	SW201	STORMWATER CONCEPT DESIGN - GROUND FLOOR PLAN	D
4	SW202	STORMWATER CONCEPT DESIGN - ROOF PLAN	D
5	SW203	STORMWATER CONCEPT DESIGN - EMERGENCY OVERLAND FLOW PLAN	D
6	SW300	STORMWATER CONCEPT DESIGN - DETAILS SHEET	D
7	SW400	EROSION AND SEDIMENT CONTROL - PLAN AND DETAILS	D
8	SW500	STORMWATER CONCEPT DESIGN - MUSIC CATCHMENT PLAN	D



PREPARED BY:
SGC Consulting Engineers
Suite 5.03, Level 5
156 Pacific Highway
St. Leonards, NSW 2065
T: +61 2 8883 4239
Email: office@sgce.com.au
Web: www.sgce.com.au

ARCHITECT:

URBAN LINK PTY LTD
LEVEL 10, 11-15 DEANE ST,
BURWOOD NSW 2134
P.O.BOX 2223, BURWOOD NORTH
NSW 2134
p 02-9745 2014 f 02-9745 0984
e info@urbanlink.com.au

CLIENT :

**AIMAN YOUSIF AUSTRALIAN
CONSTRUCTION EXPERTS
PTY LTD.**

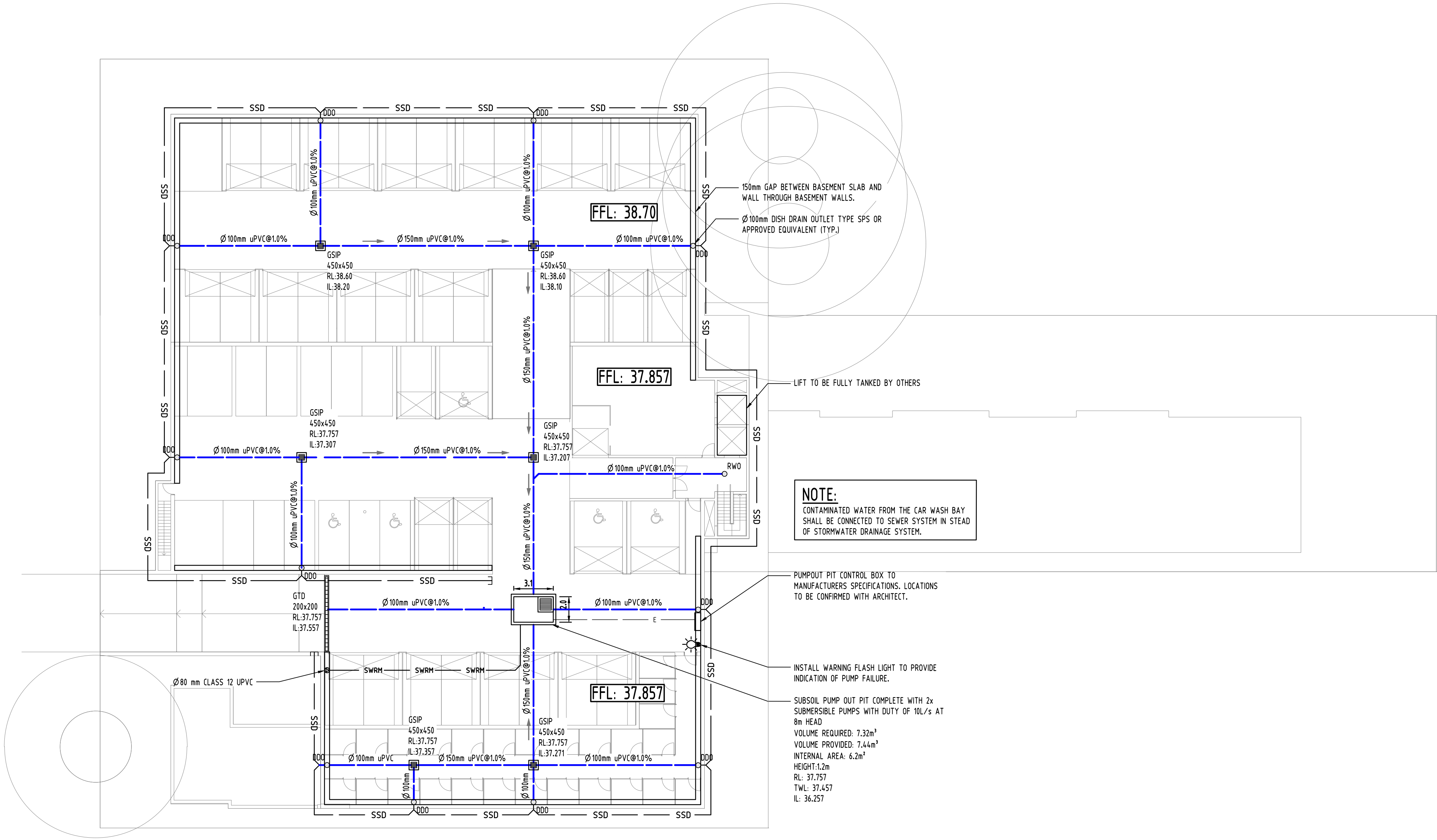
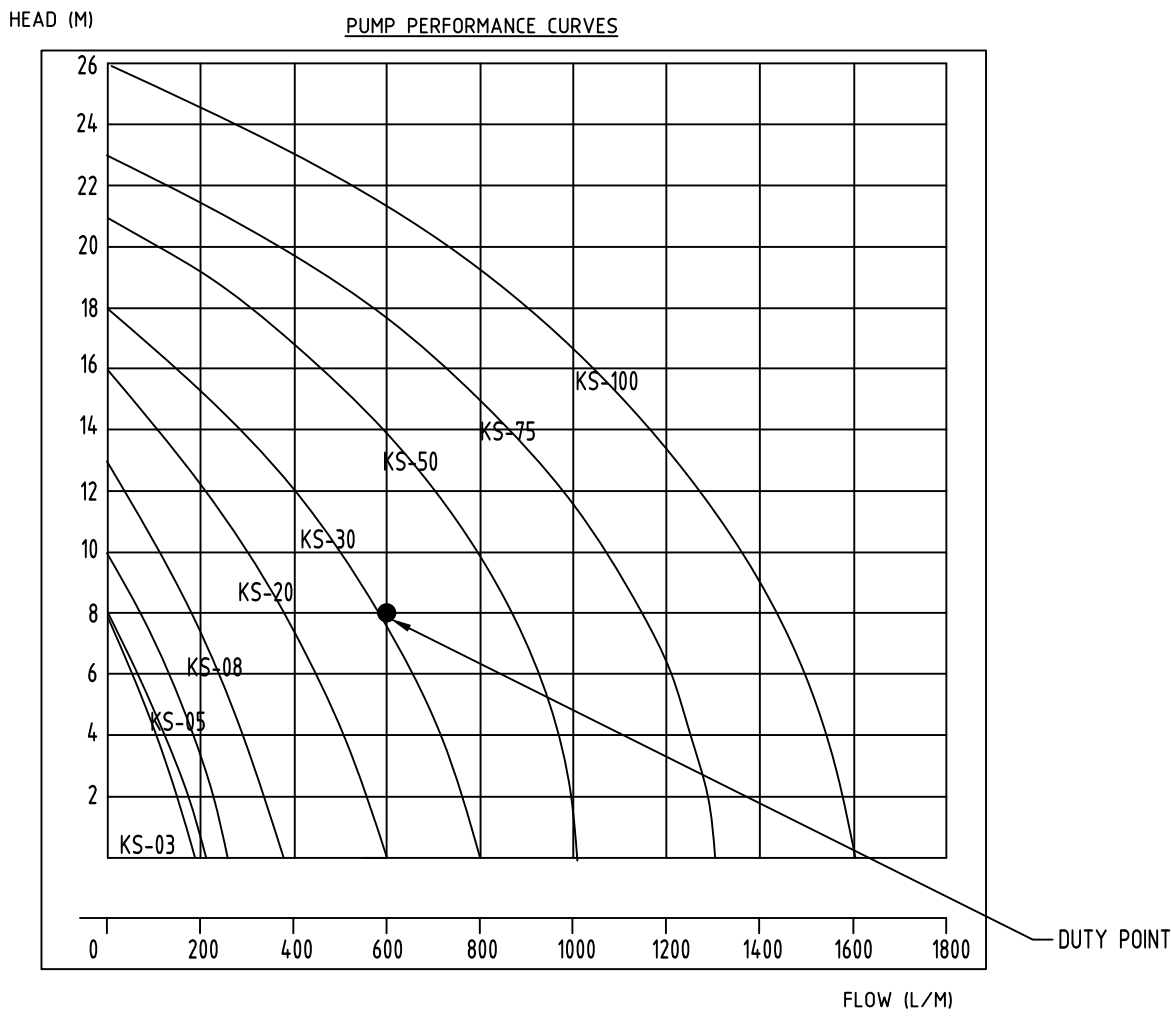
SUBSOIL DESIGN CALCS:
100yr 2hr ARI STORM = 38.6mm/hr
ARI x 2 = 77.2mm
AREA OF DRIVEWAY
RAMP UNCOVERED = 94.8m²

VOLUME OF RUNOFF
V = A x d
= 94.8 x (77.2 / 1000)
= 7.32m³

WET WELL STORAGE
MAXIMUM OF:
* VOLUME OF RUNOFF
* 3m³

THEREFORE, A VOLUME OF 7.32m³ SUBSOIL PUMP
OUT PIT WILL BE APPLIED AS PER AUSTRALIAN
STANDARD (AS3500).

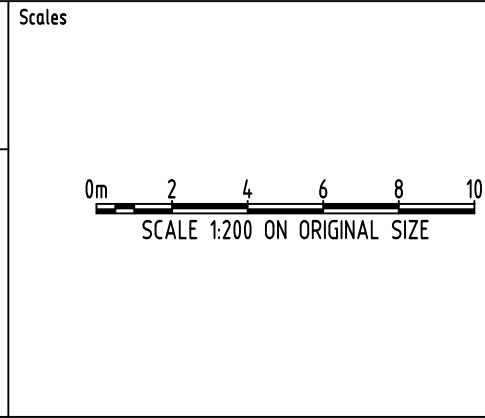
Type	Output		Outlet		Rated Head Capacity		Maximum Head Capacity		Weigh	Dimension		
	HP	kW	mm	Inch	M	LPM	M	LPM		L(mm)	W(mm)	H(mm)
KS-03	1/3	0.25	40	1 1/2"	3	130	8	180	9	188	141	305
KS-04	1/2	0.4	50	2"	5	150	8	220	11	208	140	359
KS-05	1/2	0.4	50	2"	5	160	10	260	14	230	156	375
KS-08	1	0.75	50	2"	6	240	13	380	21	290	180	425
KS-20	2	1.5	80	3"	10	300	16	600	31	278	182	475
KS-30	3	2.2	80	3"	10	500	18	800	42	390	250	450
KS-50	5	3.7	100	4"	10	800	21	1100	48	450	240	530
KS-75	7 1/2	5.6	100	4"	15	800	23	1300	60	550	310	590
KS-100	10	7.5	150	6"	18	900	25	1600	70	550	310	610



Reference Coordination Drawing				Discipline			Drawing Title and Number		Date	Rev.
D	AMENDED AS PER COUNCIL'S COMMENTS	JD	27.07.2020	2	DISCIPLINE					
C	AMENDED AS PER COUNCIL'S COMMENTS	JD	09.07.2020	2	ARCH					
B	AMENDED AS PER COUNCIL'S COMMENTS	FZ	15.10.19	2	ARCH					
A	FOR APPROVAL	FZ	26.03.19	2	STRUCT					
P3	PRELIMINARY	FZ	22.03.19	1	MECH					
P2	PRELIMINARY	FZ	21.03.19	1	ELEC					
P1	PRELIMINARY	FZ	20.03.19	1	HYD					
Issue	Last revision title	by	Date	Status	Discipline					
Issuer internal sequence and revision history										
1	preliminary				LANDS					
2	development application				CIVIL					
3	construction				SURVEY					
4	construction									
5	construction									

QUALITY CONTROL				DATE	
DRAWN	FZ	DATE	26.03.19		
CHECKED	SH	DATE	26.03.19		
DESIGNED	FZ	DATE	26.03.19		
VERIFIED	SH	DATE	26.03.19		
APPROVED	SH	DATE	26.03.19		

WARNING: THE DESIGNS, DRAWINGS, SPECIFICATIONS AND THE COPYRIGHT HEREIN REMAIN THE SOLE INTELLECTUAL PROPERTY OF S&G CONSULTANTS PTY LTD AND MUST NOT BE USED, COPIED, ALTERED OR REPRODUCED WHOLLY OR IN PART IN ANY FORM WITHOUT THE WRITTEN CONSENT OF S&G CONSULTANTS PTY LTD



CLIENT
AIMAN YOUSIF
AUSTRALIAN
CONSTRUCTION
EXPERTS PTY LTD.

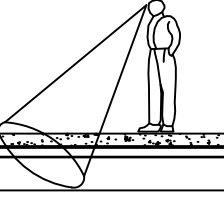
ARCHITECT
URBAN LINK PTY LTD
LEVEL 10, 11-15 DEANE ST,
BURWOOD NSW 2134
P.O.BOX 2223, BURWOOD NORTH
NSW 2134
p 02-9745 2014 f 02-9745 0984
www.urbanlink.com.au

Suite 5.03, Level 5,
156 PACIFIC HIGHWAY
ST. LEONARDS, NSW 2065
T: +61 2 8883 4239
Email: office@sgce.com.au
Web: www.sgce.com.au

A.B.N. 21 118 222 530

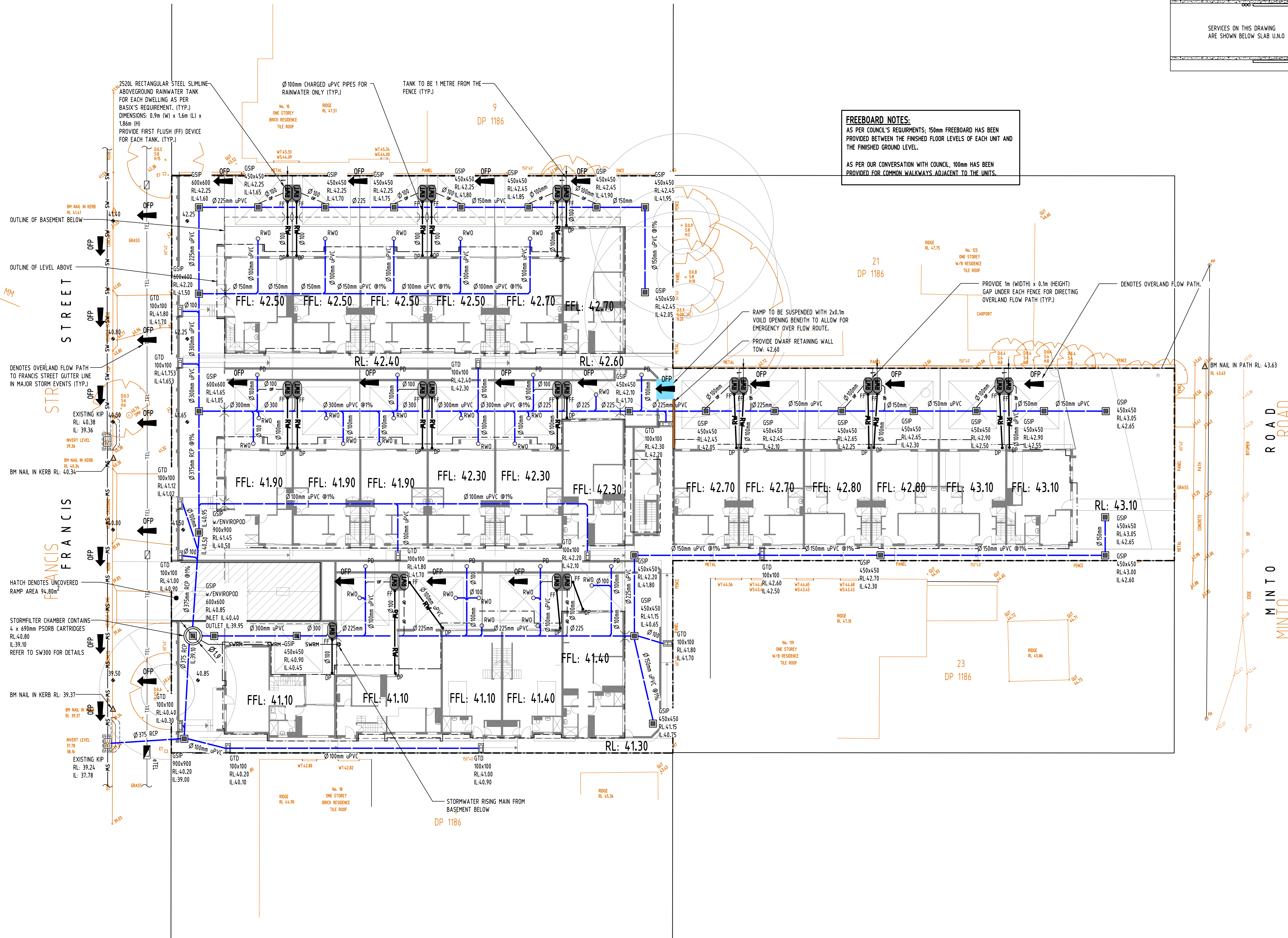
PROJECT PROPOSED RESIDENTIAL DEVELOPMENT 12-16 FRANCIS STREET, MINTO				Drawing Status FOR APPROVAL NOT TO BE USED FOR CONSTRUCTION PURPOSES		
Drawing Title STORMWATER CONCEPT DESIGN BASEMENT PLAN				Project No 20180132		
Grid -				Drawing No SW200		
Datum A.H.D.				Revision No D		
Sheet 2 OF 7				Scale (at original size) 1:200 @ A1		

SERVICES ON THIS DRAWING
ARE SHOWN BELOW SLAB U.N.O.



FREEBOARD NOTES:
AS PER COUNCIL'S REQUIREMENTS, 150mm FREEBOARD HAS BEEN PROVIDED BETWEEN THE FINISHED FLOOR LEVELS OF EACH UNIT AND THE FINISHED GROUND LEVEL.

AS PER OUR CONVERSATION WITH COUNCIL, 100mm HAS BEEN PROVIDED FOR COMMON WALKWAYS ADJACENT TO THE UNITS.



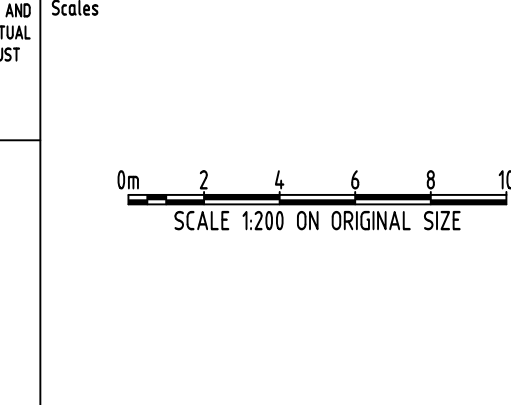
Reference Coordination Drawing											
D	AMENDED AS PER COUNCIL'S COMMENTS				JD	27.07.2020	2	Discipline	Drawing Title and Number	Date	Rev.
C	AMENDED AS PER COUNCIL'S COMMENTS				JO	09.07.2020	2	ARCH			
B	AMENDED AS PER COUNCIL'S COMMENTS				FZ	15.10.19	2	ARCH			
A	FOR APPROVAL				FZ	26.03.19	2	ARCH			
P3	PRELIMINARY				FZ	22.03.19	1	STRUCT			
P2	PRELIMINARY				FZ	21.03.19	1	MECH			
P1	PRELIMINARY				FZ	20.03.19	1	ELEC			
Issue	Last revision title				by	Date	Status	FRG			
Issuer internal sequence and revision history											
1-preliminary		2-development application				3-construction certificate				LANDS	
4-tender		5-construction				6-other				CIVIL	
SURVEY											

ENGINEERS AUSTRALIA
Chartered Professional Engineer
MEMBER

DIMENSIONS NOT SHOWN TO BE CHECKED ON SITE. DO NOT SCALE THIS DRAWING. POSTING OF AUTHORITIES NAME AND/OR EXISTING SERVICES ARE TO BE CHECKED PRIOR TO COMMENCEMENT OF WORK. REPORT ANY DISCREPANCIES TO THE CONSULTING ENGINEER FOR DESIGN/CLARIFICATION BEFORE PROCEEDING WITH THE WORK. THIS DRAWING IS TO BE READ IN CONJUNCTION WITH THE SPECIFICATIONS AND OTHER CONSULTANTS' DRAWINGS.

QUALITY CONTROL			
DRAWN	FZ	DATE	26.03.19
CHECKED	SH	DATE	26.03.19
DESIGNED	FZ	DATE	26.03.19
VERIFIED	SH	DATE	26.03.19
APPROVED	SH	DATE	26.03.19

WARNING: THE DESIGNS, DRAWINGS, SPECIFICATIONS AND THE COPYRIGHT HEREIN REMAIN THE SOLE INTELLECTUAL PROPERTY OF SGC CONSULTANTS PTY LTD AND MUST NOT BE USED, COPIED, ALTERED OR REPRODUCED WHOLLY OR IN PART IN ANY FORM WITHOUT THE WRITTEN CONSENT OF SGC CONSULTANTS PTY LTD



CLIENT
AIMAN YOUSIF
AUSTRALIAN
CONSTRUCTION
EXPERTS PTY LTD.

ARCHITECT
URBAN LINK PTY LTD
LEVEL 10, 11-15 DEANE ST,
BURWOOD NSW 2134
P.O. BOX 2223, BURWOOD NORTH
NSW 2134
p 02-9745 2014 f 02-9745 0984
e info@urbanlink.com.au

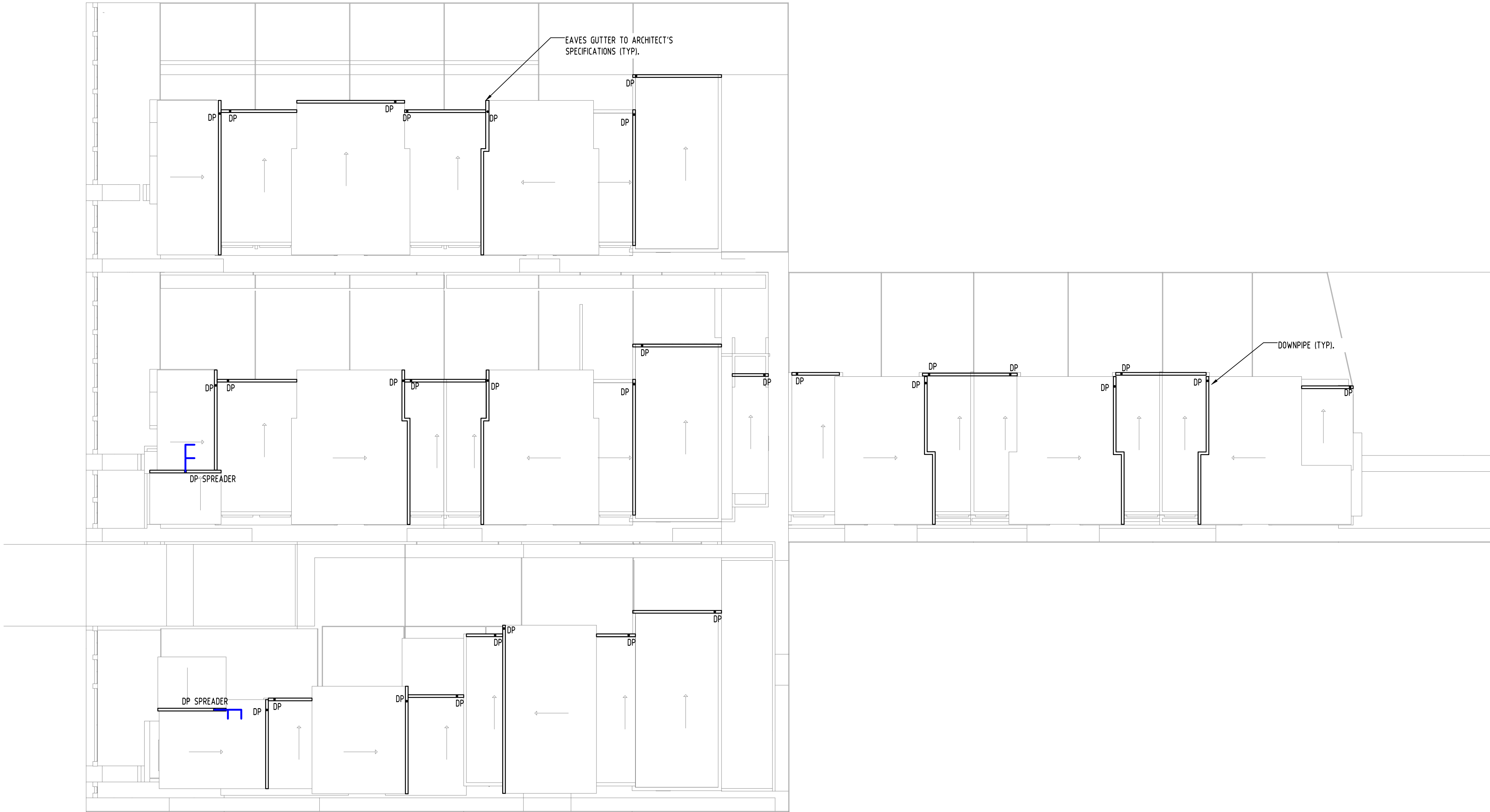
SGC
Engineering Value

Suite 5.03, Level 5,
156 PACIFIC HIGHWAY
ST. LEONARDS, NSW 2065
T: +61 2 8883 4239
Email: office@sgce.com.au
Web: www.sgce.com.au

A.B.N. 21 118 222 530

PROJECT PROPOSED RESIDENTIAL DEVELOPMENT 12-16 FRANCIS STREET, MINTO			Drawing Status FOR APPROVAL NOT TO BE USED FOR CONSTRUCTION PURPOSES Drawing Title STORMWATER CONCEPT DESIGN GROUND FLOOR PLAN		
Grid	Datum	Sheet	Scale (at original size)	Project No	Drawing No
-	A.H.D.	3 OF 7	1200 @ A1	20180132	SW201
			Revision No	D	

SERVICES ON THIS DRAWING
ARE SHOWN BELOW SLAB U.N.O




Reference Coordination Drawing					Rev.		
D	AMENDED AS PER COUNCIL'S COMMENTS	JD	27.07.2020	2	Discipline	Drawing Title and Number	Date
C	AMENDED AS PER COUNCIL'S COMMENTS	JD	09.07.2020	2	ARCH		
B	AMENDED AS PER COUNCIL'S COMMENTS	FZ	15.10.19	2	ARCH		
A	FOR APPROVAL	FZ	26.03.19	2	STRUCT		
P3	PRELIMINARY	FZ	22.03.19	1	MECH		
P2	PRELIMINARY	FZ	21.03.19	1	ELEC		
P1	PRELIMINARY	FZ	26.03.19	1	HYD		
Issue	Last revision title	by	Date	Status	FIRE		
Issuer internal sequence and revision history					LANDS		
1-preliminary	2-development application	3-construction certificate	4-tender	5-construction	6-other	CIVIL	
						SURVEY	

**ENGINEERS AUSTRALIA**
Chartered Professional Engineer
MEMBER

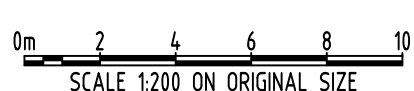
DIMENSIONS NOT SHOWN TO BE CHECKED ON SITE. DO NOT SCALE OF THIS DRAWING. POSTING OF AUTHORITIES HANG AND/OR EXISTING SERVICES ARE TO BE CHECKED PRIOR TO COMMENCEMENT OF WORK. REPORT ANY DISCREPANCIES TO THE CONSULTING ENGINEER FOR DESIGN/CLARIFICATION BEFORE PROCEEDING WITH THE WORK. THIS DRAWING IS TO BE READ IN CONJUNCTION WITH THE SPECIFICATIONS AND OTHER CONSULTANTS' DRAWINGS.

QUALITY CONTROL			
DRAWN	FZ	DATE	26.03.19
CHECKED	SH	DATE	26.03.19
DESIGNED	FZ	DATE	26.03.19
VERIFIED	SH	DATE	26.03.19
APPROVED	SH	DATE	26.03.19

WARNING: THE DESIGNS, DRAWINGS, SPECIFICATIONS AND THE COPYRIGHT HEREIN REMAIN THE SOLE INTELLECTUAL PROPERTY OF S&G CONSULTANTS PTY LTD AND MUST NOT BE USED, COPIED, ALTERED OR REPRODUCED WHOLLY OR IN PART IN ANY FORM WITHOUT THE WRITTEN CONSENT OF S&G CONSULTANTS PTY LTD



Scales


SCALE 1:200 ON ORIGINAL SIZE

CLIENT
AIMAN YOUSIF AUSTRALIAN CONSTRUCTION EXPERTS PTY LTD.

ARCHITECT
URBAN LINK PTY LTD
LEVEL 10, 11-15 DEANE ST.,
BURWOOD NSW 2134
P.O.BOX 2223, BURWOOD NORTH
NSW 2134
p 02-9745 2014 f 02-9745 0984
e info@urbanlink.com.au



Suite 5.03, Level 5,
156 PACIFIC HIGHWAY
ST. LEONARDS, NSW 2065
T: +61 2 8883 4239
Email: office@sgce.com.au
Web: www.sgce.com.au

A.B.N. 21 118 222 530

PROJECT
PROPOSED RESIDENTIAL DEVELOPMENT
12-16 FRANCIS STREET,
MINTO

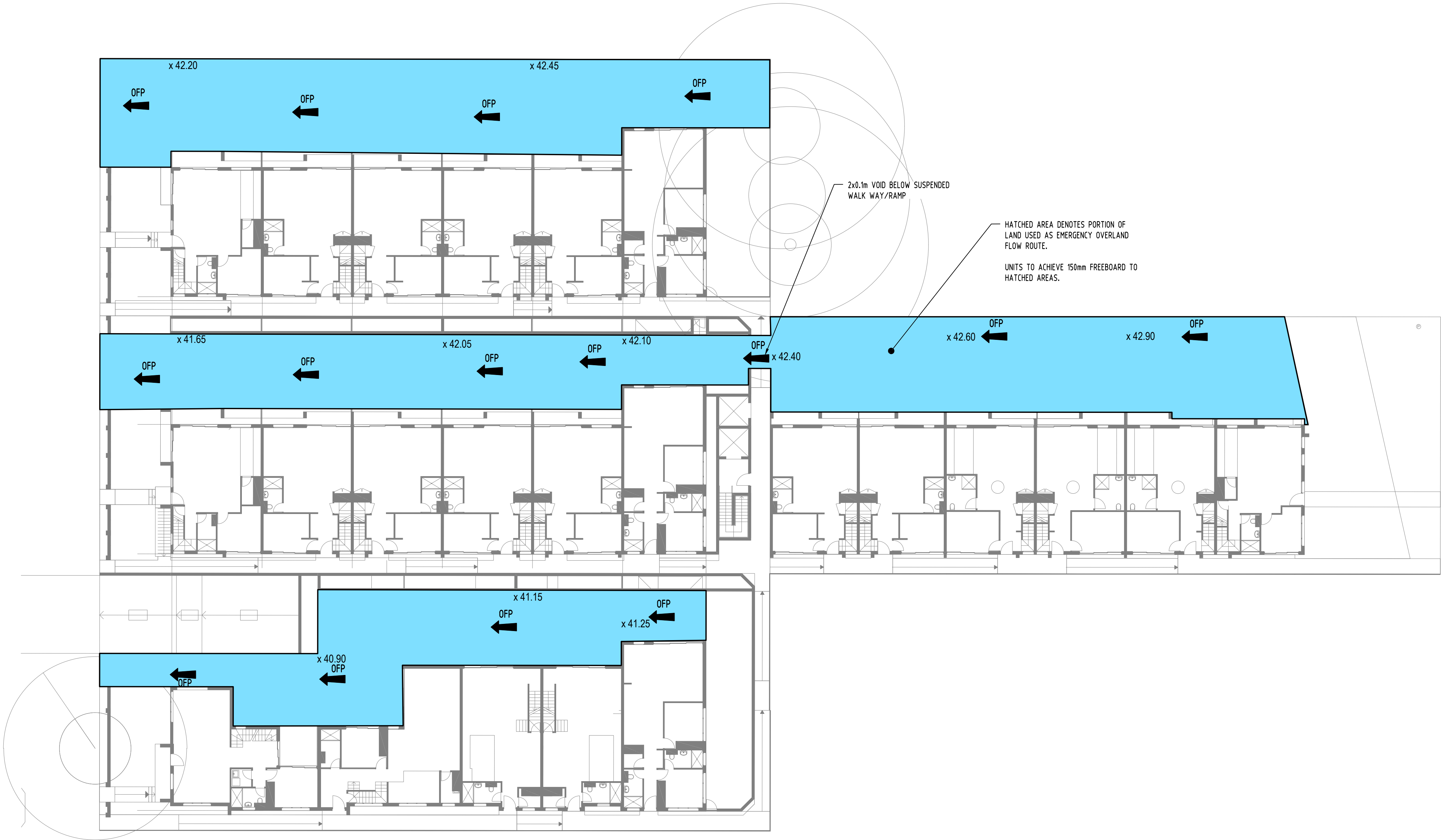
Grid Datum Sheet Scale (at original size)
- A.H.D. 4 OF 7 1:200 @ A1

Drawing Status
FOR APPROVAL
NOT TO BE USED FOR CONSTRUCTION PURPOSES

Drawing Title
STORMWATER CONCEPT DESIGN ROOF PLAN

Project No Drawing No Revision No
20180132 SW202 D

SERVICES ON THIS DRAWING
ARE SHOWN BELOW SLAB U.N.O

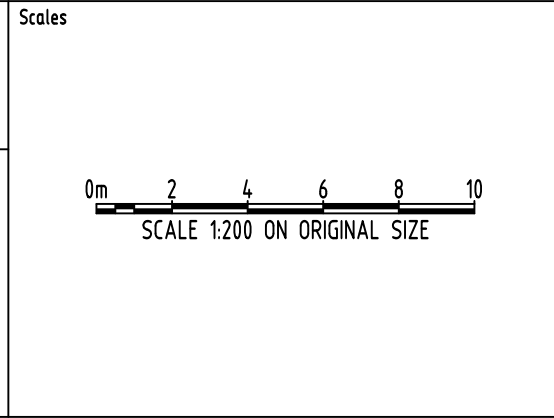


Reference Coordination Drawing							
					Discipline	Drawing Title and Number	Date
D	AMENDED AS PER COUNCIL'S COMMENTS	JD	27.07.2020	2			
C	AMENDED AS PER COUNCIL'S COMMENTS	JD	09.07.2020	2	ARCH		
B	AMENDED AS PER COUNCIL'S COMMENTS	FZ	15.10.19	2	ARCH		
A	FOR APPROVAL	FZ	26.03.19	2	STRUCT		
P3	PRELIMINARY	FZ	22.03.19	1	MECH		
P2	PRELIMINARY	FZ	21.03.19	1	ELEC		
P1	PRELIMINARY	FZ	20.03.19	1	HYD		
Issue	Last revision title	by	Date	Status	FIRE		
Issuer internal sequence and revision history					LANDS		
1	preliminary				CIVIL		
4	tender				SURVEY		
2	development application						
3	construction certificate						
5	construction						
6	other						

ENGINEERS AUSTRALIA
Qualified Professional Engineer
MEMBER

QUALITY CONTROL			
DRAWN	FZ	DATE	26.03.19
CHECKED	SH	DATE	26.03.19
DESIGNED	FZ	DATE	26.03.19
VERIFIED	SH	DATE	26.03.19
APPROVED	SH	DATE	26.03.19

WARNING: THE DESIGNS, DRAWINGS, SPECIFICATIONS AND THE COPYRIGHT HEREIN REMAIN THE SOLE INTELLECTUAL PROPERTY OF S&G CONSULTANTS PTY LTD AND MUST NOT BE USED, COPIED, ALTERED OR REPRODUCED WHOLLY OR IN PART IN ANY FORM WITHOUT THE WRITTEN CONSENT OF S&G CONSULTANTS PTY LTD



CLIENT
AIMAN YOUSIF
AUSTRALIAN
CONSTRUCTION
EXPERTS PTY LTD.

ARCHITECT
URBAN LINK PTY LTD
LEVEL 10, 11-15 DEANE ST,
BURWOOD NSW 2134
P.O.BOX 2223, BURWOOD NORTH
NSW 2134
p 02-9745 2014 f 02-9745 0984
e info@urbanlink.com.au

Suite 5.03, Level 5,
156 PACIFIC HIGHWAY
ST. LEONARDS, NSW 2065
T: +61 2 8883 4239
Email: office@sgce.com.au
Web: www.sgce.com.au

A.B.N. 21 118 222 530

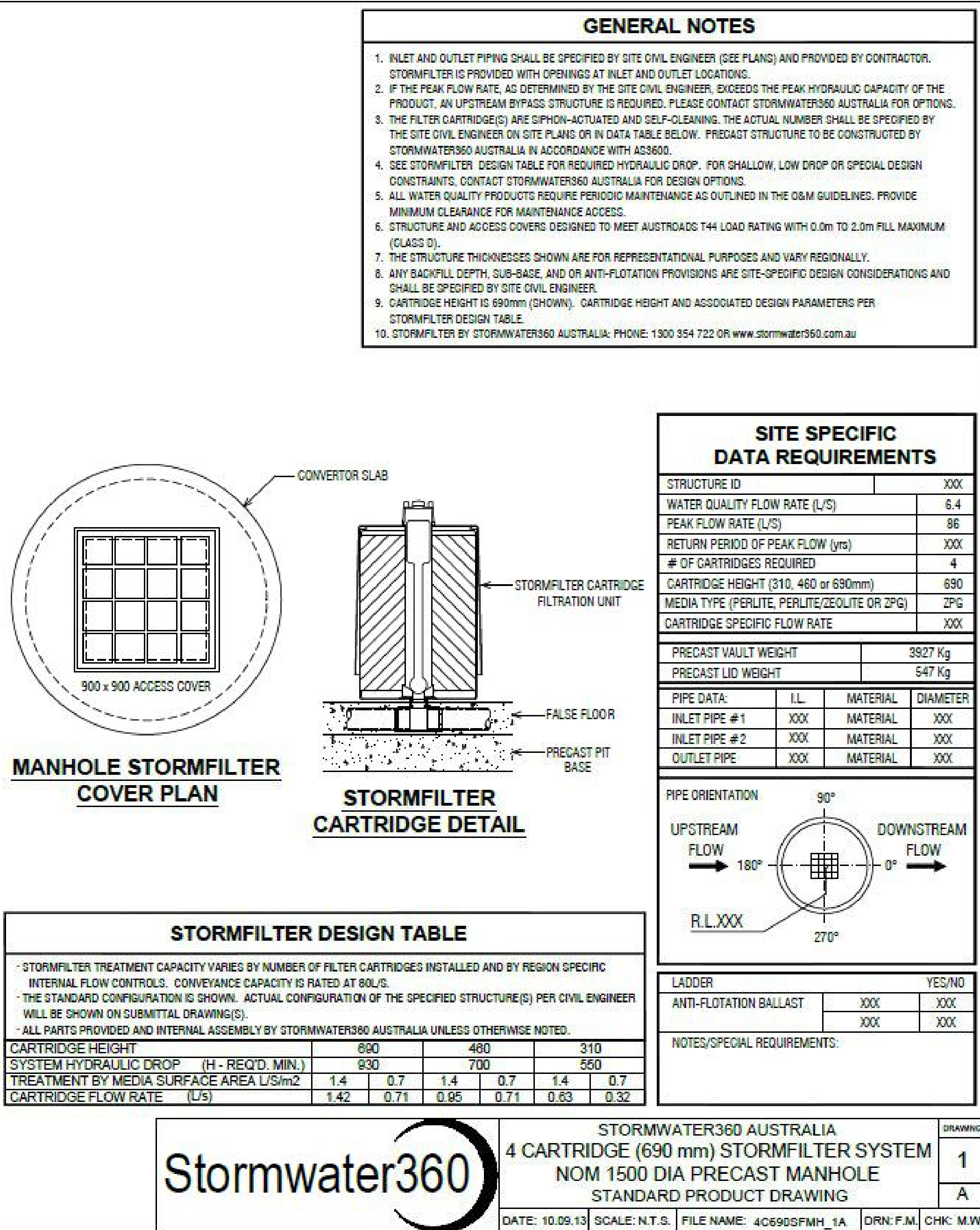
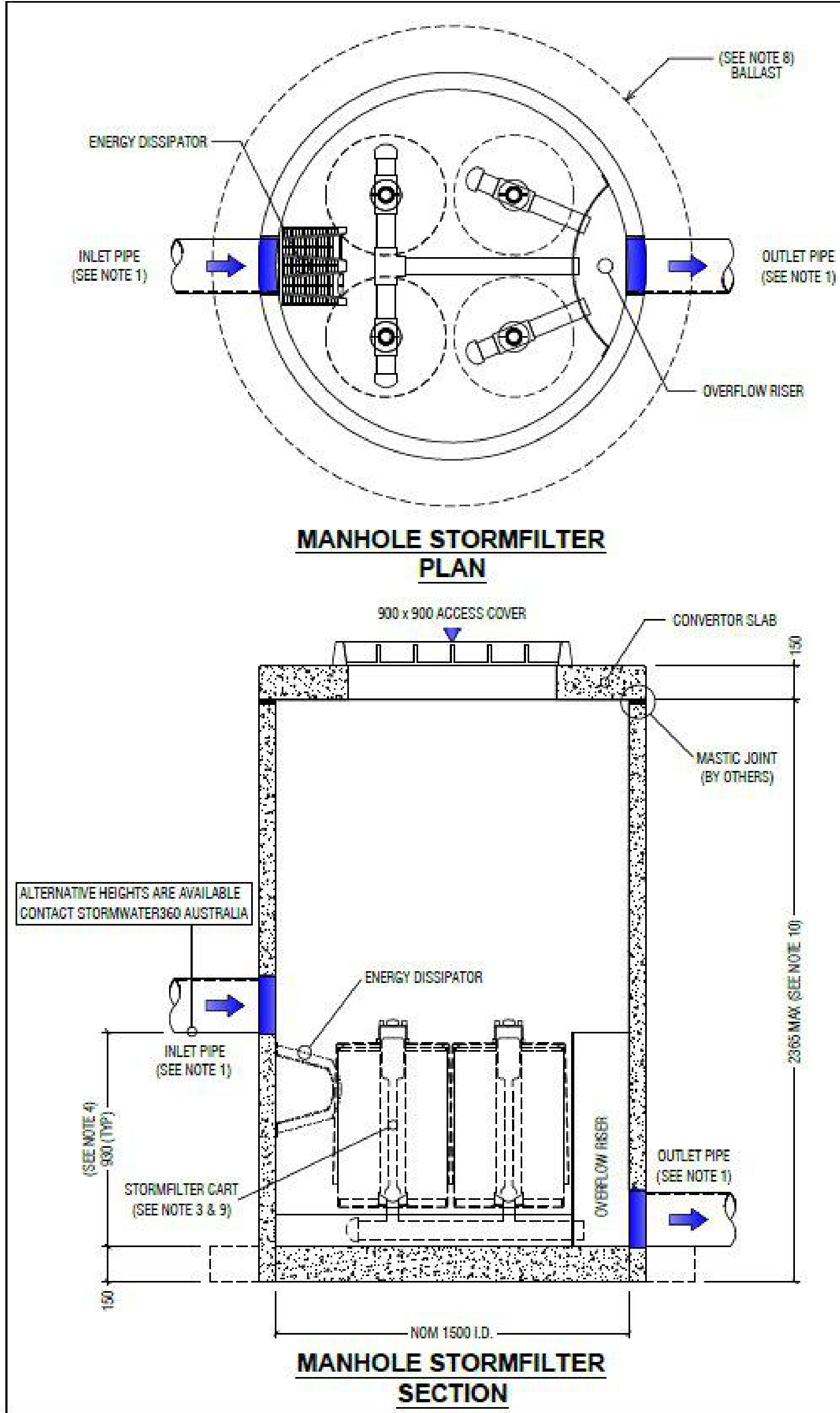
PROJECT
PROPOSED RESIDENTIAL
DEVELOPMENT
12-16 FRANCIS STREET,
MINTO

Grid Datum Sheet Scale (at original size)
- A.H.D. 3 OF 7 1:200 @ A1

Drawing Status FOR APPROVAL
NOT TO BE USED FOR CONSTRUCTION PURPOSES

Drawing Title
STORMWATER CONCEPT DESIGN
EMERGENCY OVERLAND FLOW PLAN

Project No Drawing No Revision No
20180132 SW203 D



STORMWATER NOTES:

LOCATED IN CAMPBELLTOWN CITY COUNCIL.

SITE AREA = 4106m²

ON-SITE DETENTION (OSD) IS NOT REQUIRED AS ADVISED BY COUNCIL'S STORMWATER ENGINEER.

WSUD IS REQUIRED FOR THE PROPOSED DEVELOPMENT.

TARGETS:

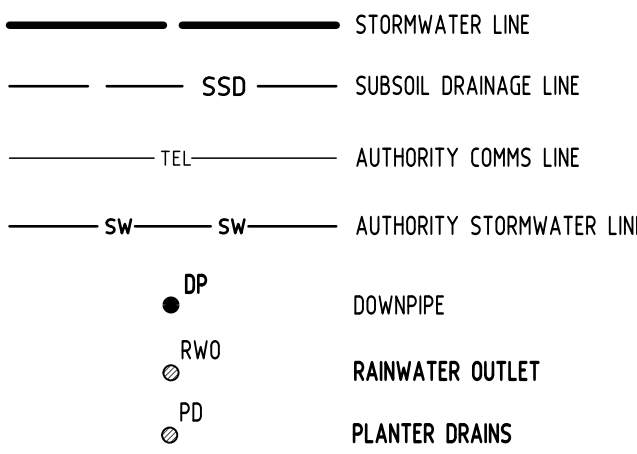
TSS: 85%

TP: 65%

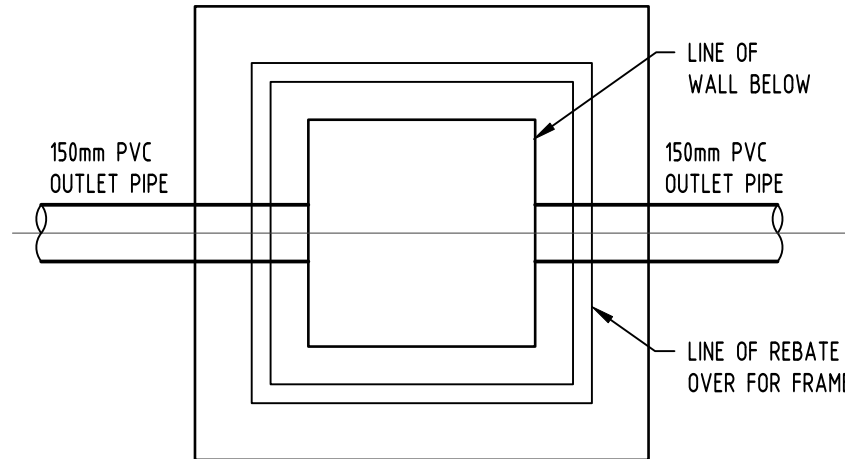
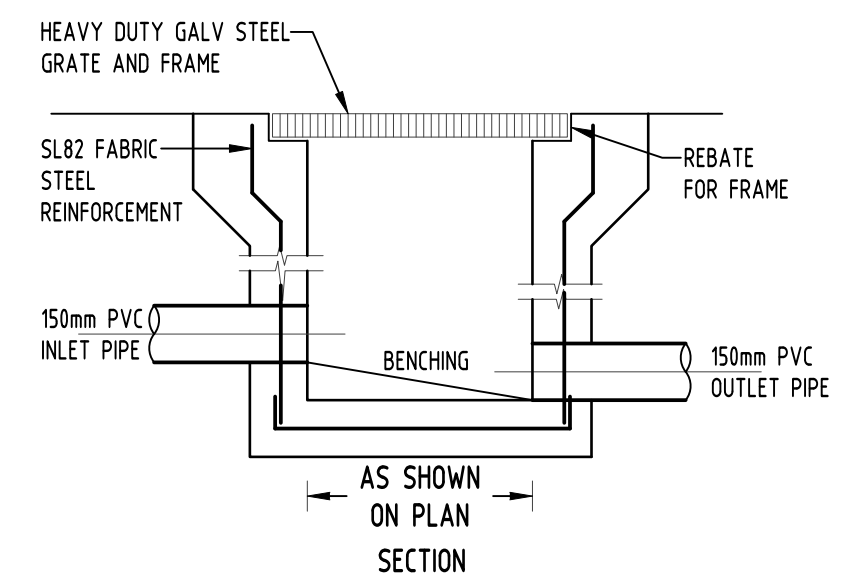
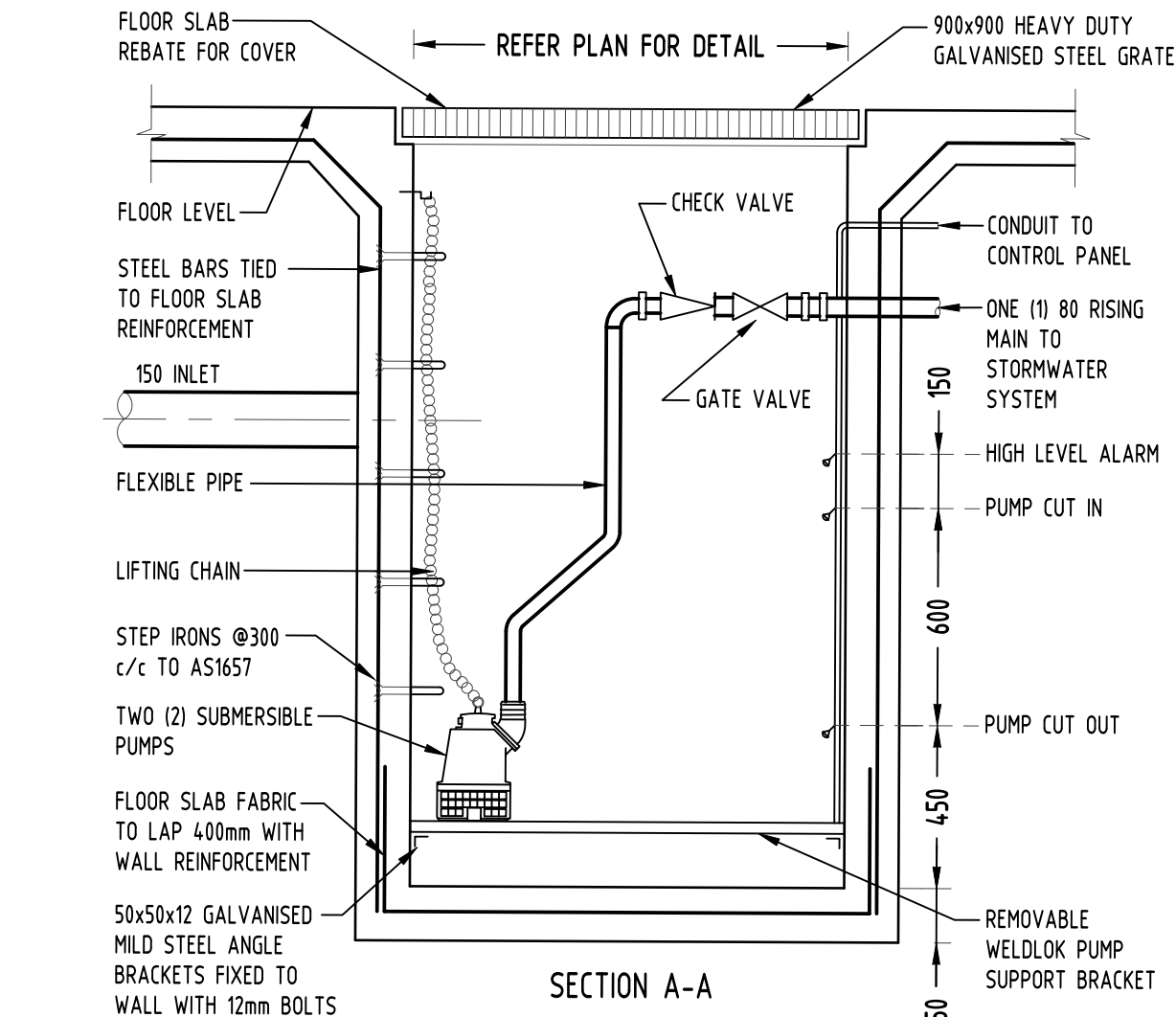
TN: 45%

THE SITE IS SUBJECT TO 1% ANNUAL EXCEEDANCE PROBABILITY FLOOD DUE TO MINOR OVERLAND FLOW WHICH ENTERS FROM MINTO ROAD. FLOOR LEVELS HAVE BEEN RAISED UP AS PER COUNCIL'S FLOOD ADVICE LETTER.

LEGEND:

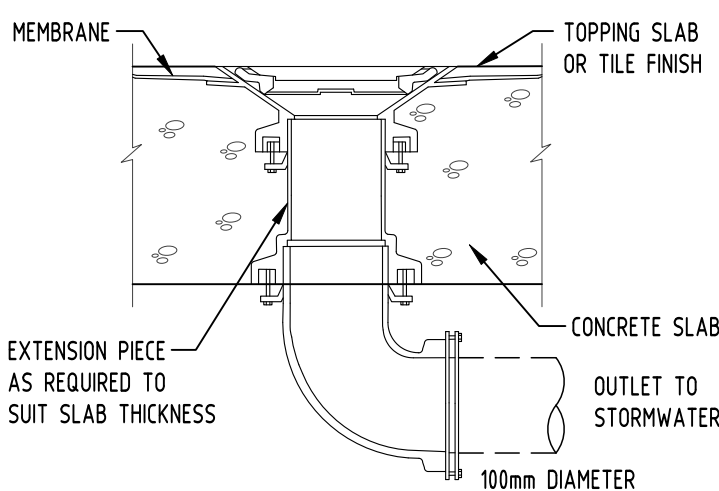


SERVICES SHOWN ON PLAN ARE INDICATIVE, EXACT DEPTH AND LOCATION TO BE CONFIRMED ONSITE. CONTRACTOR TO CARRY OUT DIAL BEFORE YOU DIG APPLICATION AND ENGAGE A REGISTERED SURVEYOR TO PEG OUT ALL EXISTING SERVICES PRIOR TO ANY WORK COMMENCING ONSITE.



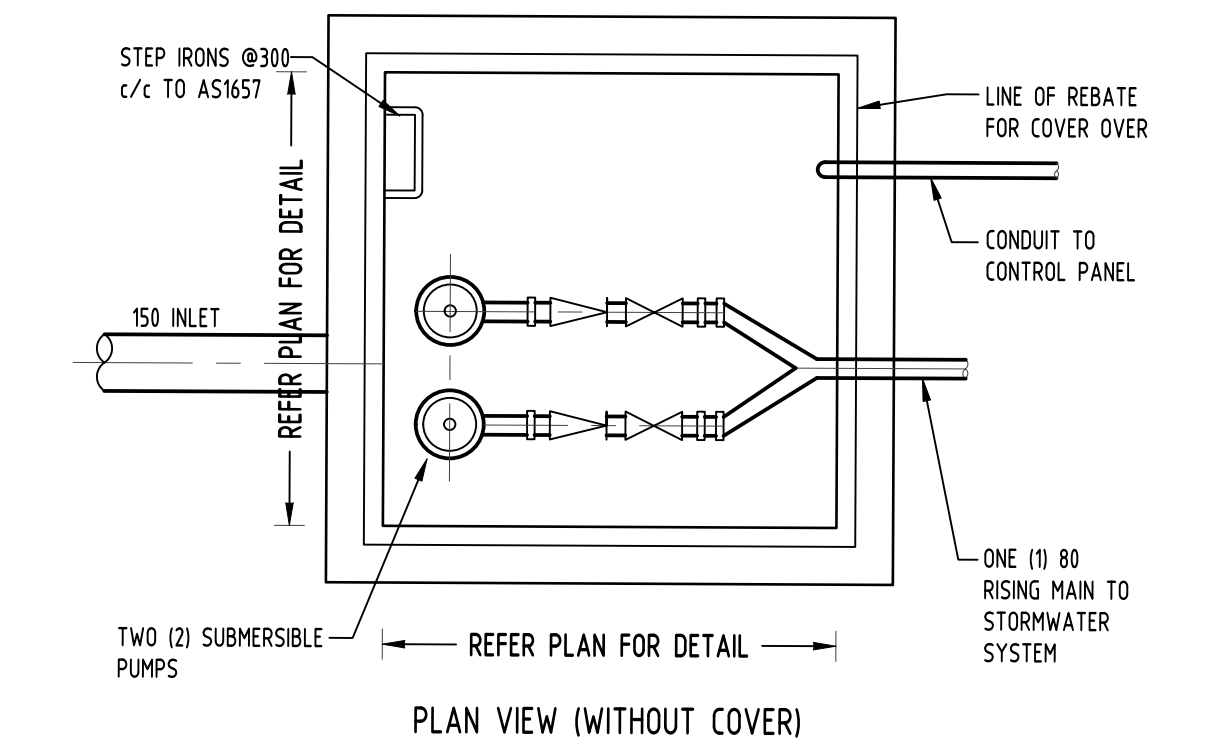
DETAIL

3 STORMWATER PIT SCALE 1:20



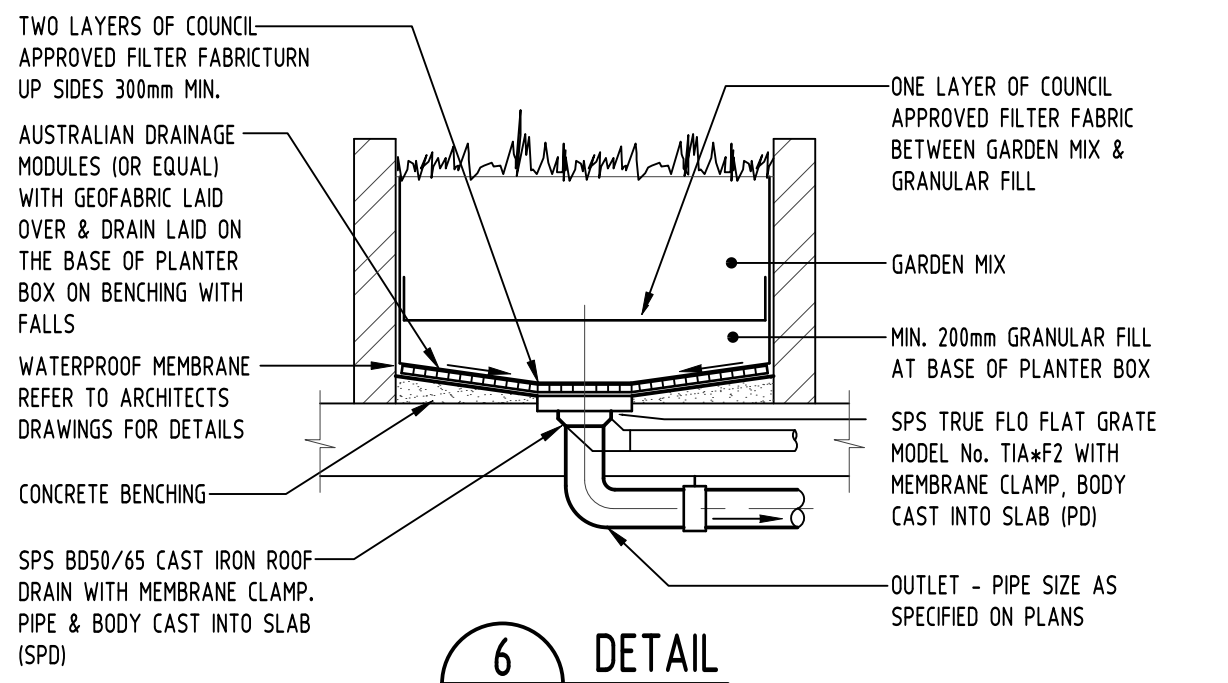
DETAIL

5 RAINWATER OUTLET NOT TO SCALE



DETAIL

4 SUBSOIL PUMP OUT PIT SCALE 1:20



DETAIL

6 PLANTER DRAIN SCALE 1:20

Reference Coordination Drawing				Revision History			
D	AMENDED AS PER COUNCIL'S COMMENTS	JO	27.07.2020	2	Discipline	Drawing Title and Number	Date
C	AMENDED AS PER COUNCIL'S COMMENTS	JO	09.07.2020	2	ARCH		
B	AMENDED AS PER COUNCIL'S COMMENTS	FZ	15.10.19	2	ARCH		
A	FOR APPROVAL	FZ	26.03.19	2	STRUCT		
P3	PRELIMINARY	FZ	22.03.19	1	MECH		
P2	PRELIMINARY	FZ	21.03.19	1	ELEC		
P1	PRELIMINARY	FZ	20.03.19	1	HYD		
Issue	Last revision title	by	Date	Status			
Issuer internal sequence and revision history							
1	preliminary	2	development application	3	construction certificate	4	other
4	tender	5	construction	6	other		

Reference Coordination Drawing				Revision History			
D	AMENDED AS PER COUNCIL'S COMMENTS	JO	27.07.2020	2	Discipline	Drawing Title and Number	Date
C	AMENDED AS PER COUNCIL'S COMMENTS	JO	09.07.2020	2	ARCH		
B	AMENDED AS PER COUNCIL'S COMMENTS	FZ	15.10.19	2	ARCH		
A	FOR APPROVAL	FZ	26.03.19	2	STRUCT		
P3	PRELIMINARY	FZ	22.03.19	1	MECH		
P2	PRELIMINARY	FZ	21.03.19	1	ELEC		
P1	PRELIMINARY	FZ	20.03.19	1	HYD		
Issue	Last revision title	by	Date	Status			
Issuer internal sequence and revision history							
1	preliminary	2	development application	3	construction certificate	4	other
4	tender	5	construction	6	other		

Reference Coordination Drawing				Revision History			
D	AMENDED AS PER COUNCIL'S COMMENTS	JO	27.07.2020	2	Discipline	Drawing Title and Number	Date
C	AMENDED AS PER COUNCIL'S COMMENTS	JO	09.07.2020	2	ARCH		
B	AMENDED AS PER COUNCIL'S COMMENTS	FZ	15.10.19	2	ARCH		
A	FOR APPROVAL	FZ	26.03.19	2	STRUCT		
P3	PRELIMINARY	FZ	22.03.19	1	MECH		
P2	PRELIMINARY	FZ	21.03.19	1	ELEC		
P1	PRELIMINARY	FZ	20.03.19	1	HYD		
Issue	Last revision title	by	Date	Status			
Issuer internal sequence and revision history							
1	preliminary	2	development application	3	construction certificate	4	other
4	tender	5	construction	6	other		

Reference Coordination Drawing				Revision History			
D	AMENDED AS PER COUNCIL'S COMMENTS	JO	27.07.2020	2	Discipline	Drawing Title and Number	Date
C	AMENDED AS PER COUNCIL'S COMMENTS	JO	09.07.2020	2	ARCH		
B	AMENDED AS PER COUNCIL'S COMMENTS	FZ	15.10.19	2	ARCH		
A	FOR APPROVAL	FZ	26.03.19	2	STRUCT		
P3	PRELIMINARY	FZ	22.03.19	1	MECH		
P2	PRELIMINARY	FZ	21.03.19	1	ELEC		
P1	PRELIMINARY	FZ	20.03.19	1	HYD		
Issue	Last revision title	by	Date	Status			
Issuer internal sequence and revision history							
1	preliminary	2	development application	3	construction certificate	4	other
4	tender	5	construction	6	other		

Reference Coordination Drawing				Revision History			
D	AMENDED AS PER COUNCIL'S COMMENTS	JO	27.07.2020	2	Discipline	Drawing Title and Number	Date
C	AMENDED AS PER COUNCIL'S COMMENTS	JO	09.07.2020	2	ARCH		
B	AMENDED AS PER COUNCIL'S COMMENTS	FZ	15.10.19	2	ARCH		
A	FOR APPROVAL	FZ	26.03.19	2	STRUCT		
P3	PRELIMINARY	FZ	22.03.19	1	MECH		
P2	PRELIMINARY	FZ	21.03.19	1	ELEC		
P1	PRELIMINARY	FZ	20.03.19	1	HYD		
Issue	Last revision title	by	Date	Status			
Issuer internal sequence and revision history							
1	preliminary	2	development application	3	construction certificate	4	other
4	tender	5	construction	6	other		

Reference Coordination Drawing				Revision History			
D	AMENDED AS PER COUNCIL'S COMMENTS	JO	27.07.2020	2	Discipline	Drawing Title and Number	Date
C	AMENDED AS PER COUNCIL'S COMMENTS	JO	09.07.2020	2	ARCH		
B	AMENDED AS PER COUNCIL'S COMMENTS	FZ	15.10.19	2	ARCH		
A	FOR APPROVAL	FZ	26.03.19	2	STRUCT		
P3	PRELIMINARY	FZ	22.03.19	1	MECH		
P2	PRELIMINARY	FZ	21.03.19	1	ELEC		
P1	PRELIMINARY	FZ	20.03.19	1	HYD		
Issue	Last revision title	by	Date	Status			
Issuer internal sequence and revision history							
1	preliminary	2	development application	3	construction certificate	4	other
4	tender	5	construction	6	other		

Reference Coordination Drawing				Revision History			
D	AMENDED AS PER COUNCIL'S COMMENTS	JO	27.07.2020	2	Discipline	Drawing Title and Number	Date
C	AMENDED AS PER COUNCIL'S COMMENTS	JO	09.07.2020	2	ARCH		
B	AMENDED AS PER COUNCIL'S COMMENTS	FZ	15.10.19	2	ARCH		
A	FOR APPROVAL	FZ	26.03.19	2	STRUCT		
P3	PRELIMINARY	FZ	22.03.19	1	MECH		
P2	PRELIMINARY	FZ	21.03.19	1	ELEC		
P1	PRELIMINARY	FZ	20.03.19	1	HYD		
Issue	Last revision title	by	Date	Status			
Issuer internal sequence and revision history							
1	preliminary	2	development application	3	construction certificate	4	other
4	tender	5	construction	6	other		

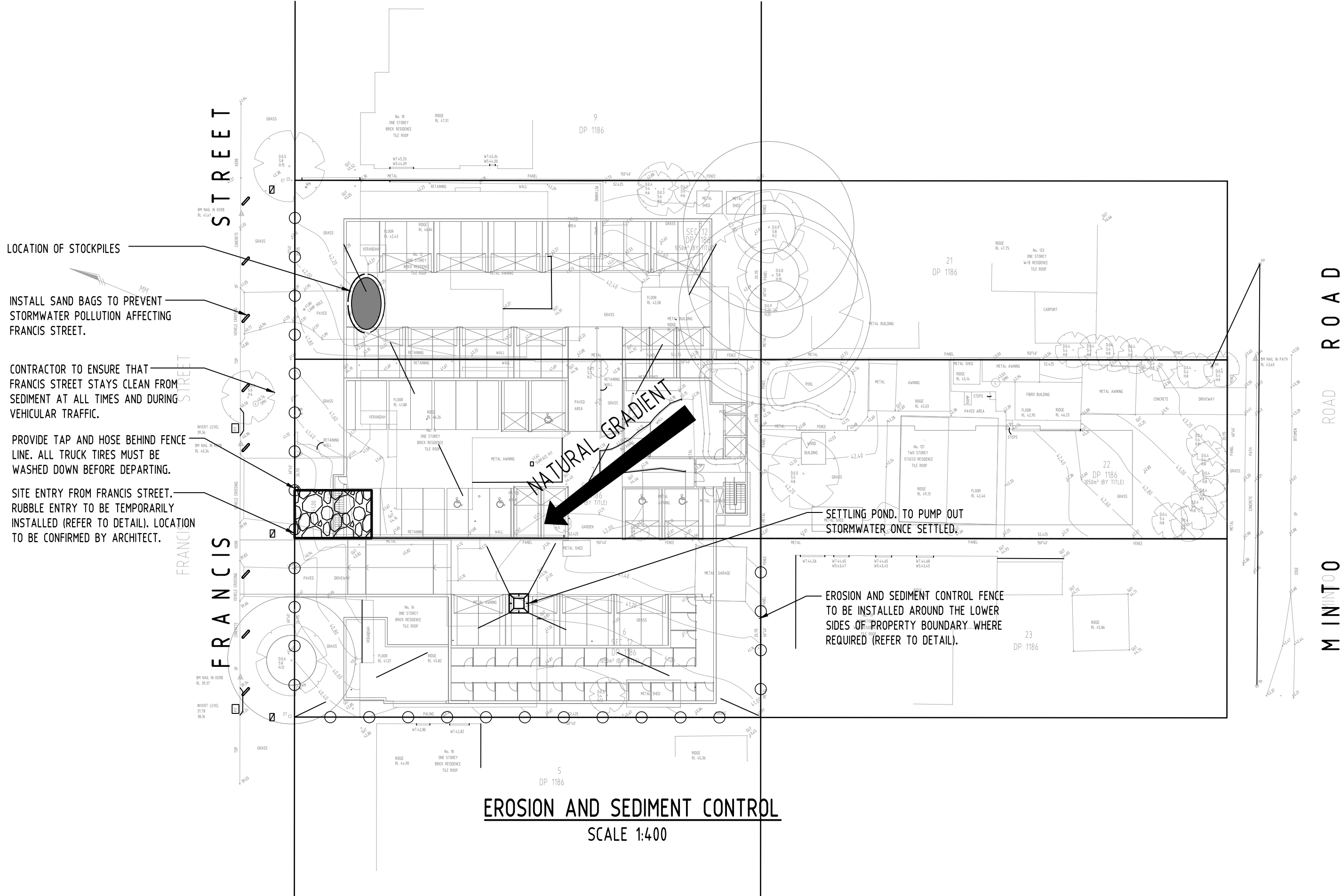
Reference Coordination Drawing				Revision History			
D	AMENDED AS PER COUNCIL'S COMMENTS	JO	27.07.2020	2	Discipline	Drawing Title and Number	Date
C	AMENDED AS PER COUNCIL'S COMMENTS	JO	09.07.2020	2	ARCH		
B	AMENDED AS PER COUNCIL'S COMMENTS	FZ	15.10.19	2	ARCH		
A	FOR APPROVAL	FZ	26.03.19	2	STRUCT		
P3	PRELIMINARY	FZ	22.03.19	1	MECH		
P2	PRELIMINARY	FZ	21.03.19	1	ELEC		
P1	PRELIMINARY	FZ	20.03.19	1	HYD		
Issue	Last revision title	by	Date	Status			
Issuer internal sequence and revision history							
1	preliminary	2	development application	3	construction certificate	4	other
4	tender	5	construction	6	other		

Reference Coordination Drawing				Revision History			
D	AMENDED AS PER COUNCIL'S COMMENTS	JO	27.07.2020	2	Discipline	Drawing Title and Number	Date
C	AMENDED AS PER COUNCIL'S COMMENTS	JO	09.07.2020	2	ARCH		
B	AMENDED AS PER COUNCIL'S COMMENTS	FZ	15.10.19	2	ARCH		
A	FOR APPROVAL	FZ	26.03.19	2	STRUCT		
P3	PRELIMINARY	FZ	22.03.19	1	MECH		
P2	PRELIMINARY	FZ	21.03.19	1	ELEC		
P1	PRELIMINARY	FZ	20.03.19	1	HYD		
Issue	Last revision title	by	Date	Status			
Issuer internal sequence and revision history							
1	preliminary	2	development application	3	construction certificate	4	other
4	tender	5	construction	6	other		

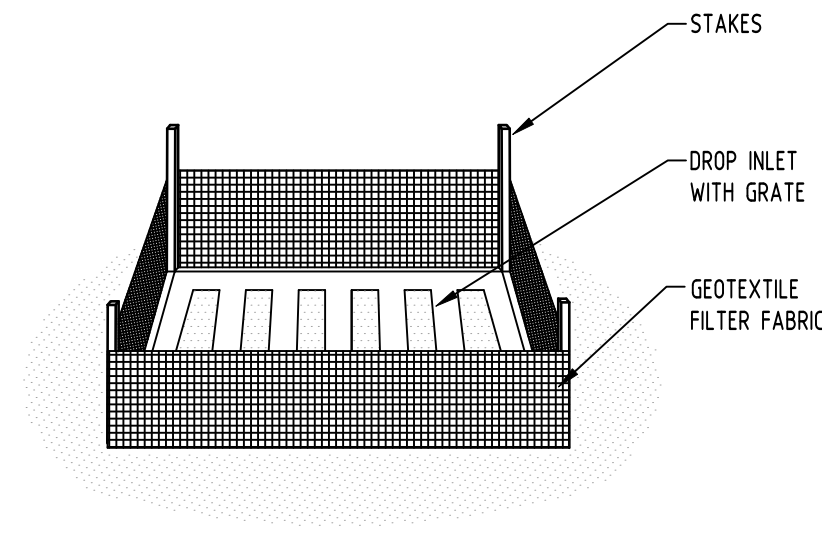
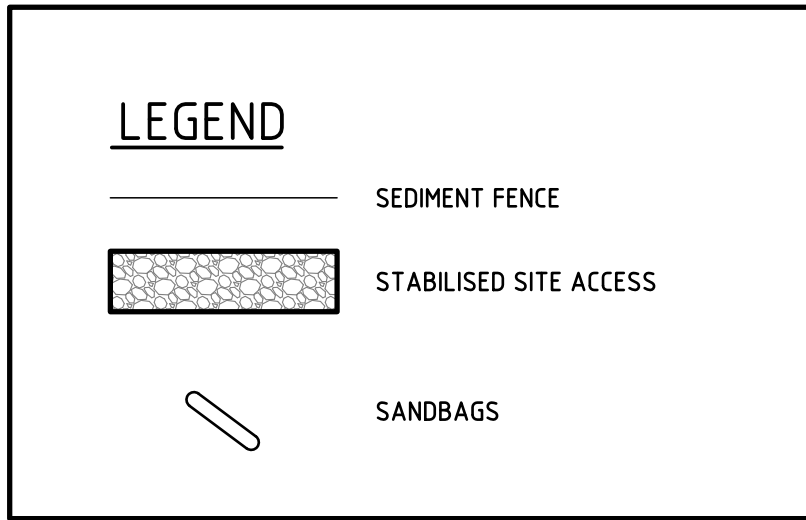
Reference Coordination Drawing				Revision History			
D	AMENDED AS PER COUNCIL'S COMMENTS	JO	27.07.2020	2	Discipline	Drawing Title and Number	Date
C	AMENDED AS PER COUNCIL'S COMMENTS	JO	09.07.2020	2	ARCH		
B	AMENDED AS PER COUNCIL'S COMMENTS	FZ	15.10.19	2	ARCH		
A	FOR APPROVAL	FZ	26.03.19	2	STRUCT		
P3	PRELIMINARY	FZ	22.03.19	1	MECH		
P2	PRELIMINARY	FZ	21.03.19	1	ELEC		
P1	PRELIMINARY	FZ	20.03.19	1	HYD		
Issue	Last revision title	by	Date	Status			
Issuer internal sequence and revision history							
1	preliminary	2	development application	3	construction certificate	4	other
4	tender	5	construction	6	other		

Reference Coordination Drawing				Revision History			
D	AMENDED AS PER COUNCIL'S COMMENTS	JO	27.07.2020	2	Discipline	Drawing Title and Number	Date
C	AMENDED AS PER COUNCIL'S COMMENTS	JO	09.07.2020	2	ARCH		
B	AMENDED AS PER COUNCIL'S COMMENTS	FZ	15.10.19	2	ARCH		
A	FOR APPROVAL	FZ	26.03.19	2	STRUCT		
P3	PRELIMINARY	FZ	22.03.19	1	MECH		
P2	PRELIMINARY	FZ	21.03.19	1	ELEC		
P1	PRELIMINARY	FZ	20.03.19	1	HYD		
Issue	Last revision title	by	Date	Status			
Issuer internal sequence and revision history							
1	preliminary	2	development application	3	construction certificate	4	other
4	tender	5	construction	6	other		

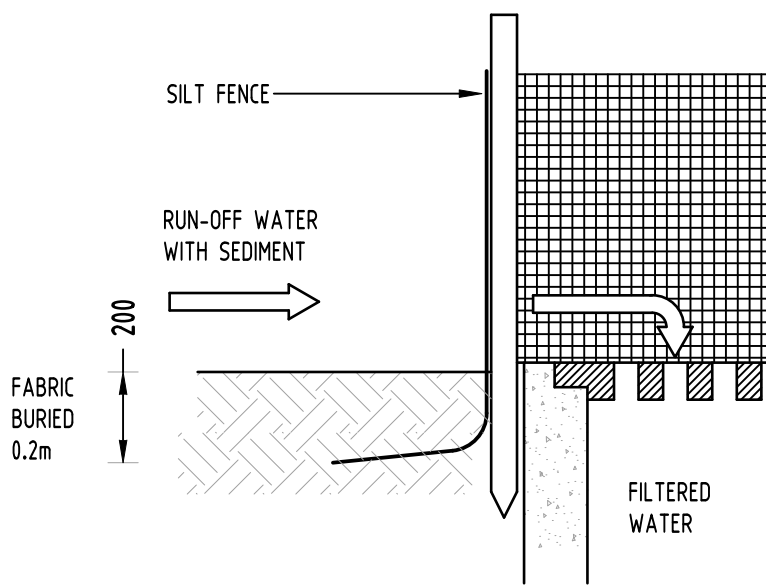
Drawing Status	FOR APPROVAL		
NOT TO BE USED FOR CONSTRUCTION PURPOSES			
Drawing Title	STORMWATER CONCEPT DESIGN DETAILS SHEET		
Project No	Drawing No	Revision No	
20180132	SW300	D	



EROSION AND SEDIMENT CONTROL
SCALE 1:400

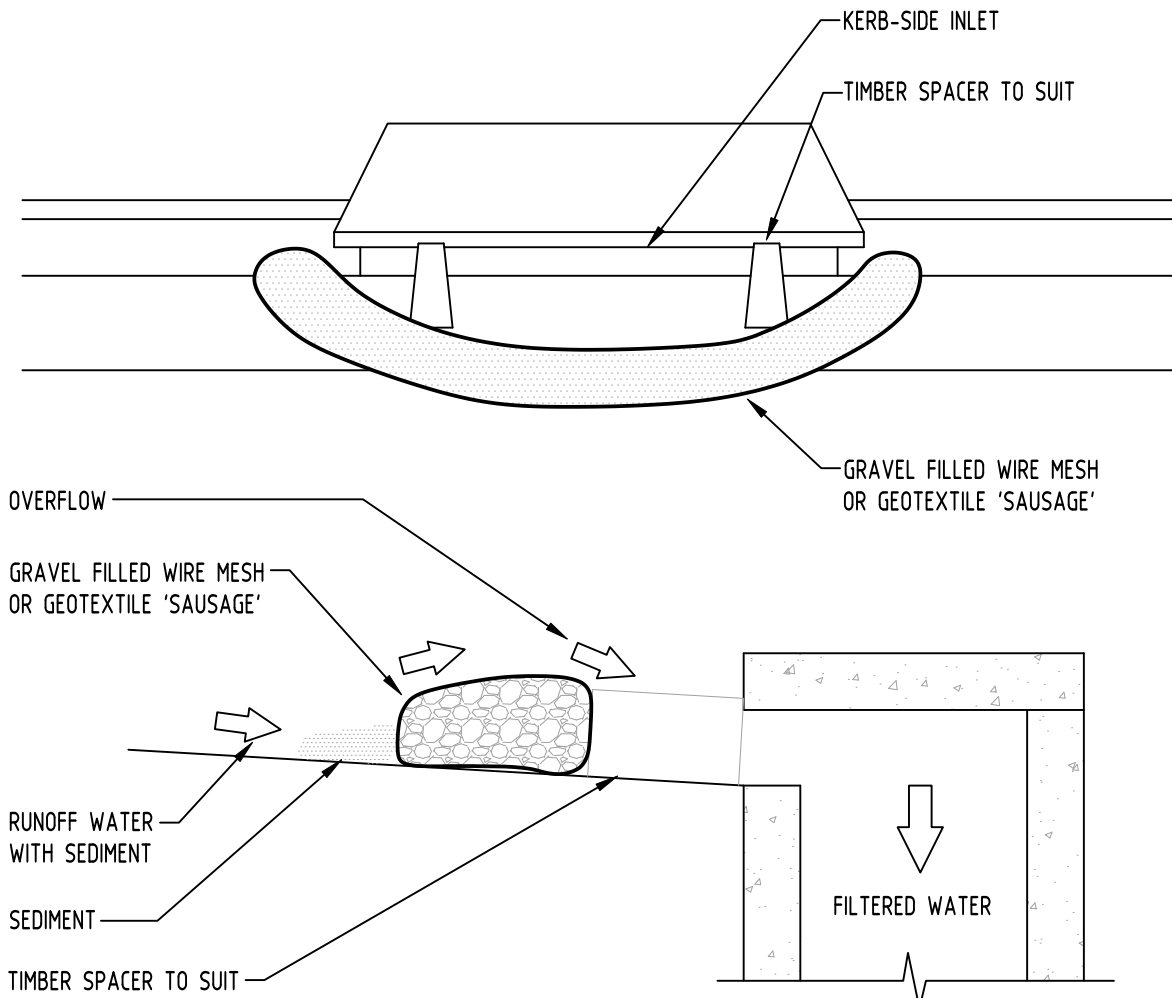


GEOTEXTILE INLET FILTER
NOT TO SCALE



EROSION & SEDIMENTATION CONTROL NOTES

- CONTRACTOR SHALL PROVIDE SEDIMENT FENCING MATERIAL DURING CONSTRUCTION TO THE LOW SIDE OF THE WORKS. THE SEDIMENT FENCING MATERIAL TO CYCLONE WIRE SECURITY FENCE. SEDIMENT CONTROL FABRIC SHALL BE AN APPROVED MATERIAL (IEG. HUMES PROPEX SILT STOP) STANDING 300mm ABOVE GROUND & EXTENDING 150mm BELOW GROUND.
- EXISTING DRAINS LOCATED WITHIN THE SITE SHALL ALSO BE ISOLATED BY SEDIMENT FENCING MATERIAL.
- NO PARKING OR STOCKPILING OF MATERIALS IS PERMITTED ON THE LOWER SIDE OF THE SEDIMENT FENCE.
- GRASS VERGES SHALL BE MAINTAINED AS MUCH AS PRACTICAL TO PROVIDE A BUFFER ZONE TO THE CONSTRUCTION SITE.
- CONSTRUCTION ENTRY/EXIT SHALL BE VIA THE LOCATION NOTED ON THE DRAWING. CONTRACTOR SHALL ENSURE ALL DROPPABLE SOIL & SEDIMENT IS REMOVED PRIOR TO CONSTRUCTION TRAFFIC EXITING SITE. CONTRACTOR SHALL ENSURE ALL CONSTRUCTION TRAFFIC ENTERING & LEAVING THE SITE DO SO IN A FORWARD DIRECTION.



GRAVEL INLET FILTER (SAUSAGE)
NOT TO SCALE

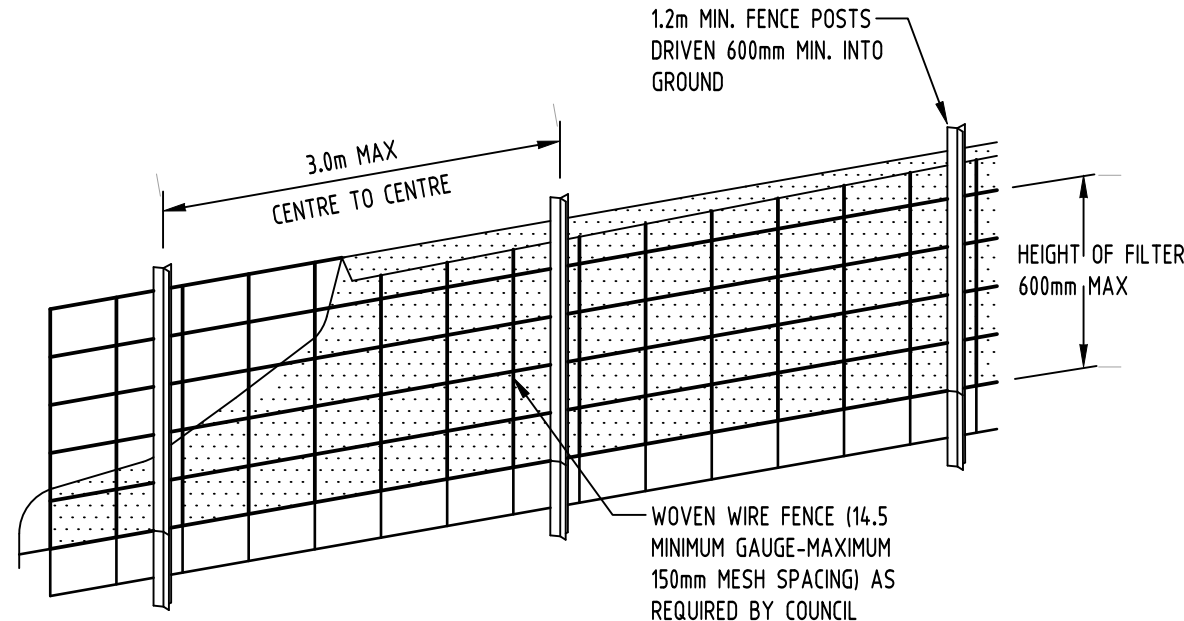
GENERAL NOTES

- THIS PLAN IS A CONCEPT PLAN ONLY FOR STORMWATER DISPOSAL & EROSION CONTROL. IT IS NOT SUITABLE FOR CONSTRUCTION. THIS PLAN SHOULD BE ADAPTED BY THE BUILDER DURING DEMOLITION, EXCAVATION & CONSTRUCTION PHASES TO ENSURE ADEQUATE PERFORMANCE.
- ALL DRAINAGE LAYOUT & DETAILS ARE DIAGRAMMATIC & INDICATIVE ONLY. ACTUAL LOCATION, SIZES, LEVELS & GRADES MAY ALTER WHEN DETAIL DESIGN WORKS ARE DOCUMENTED.

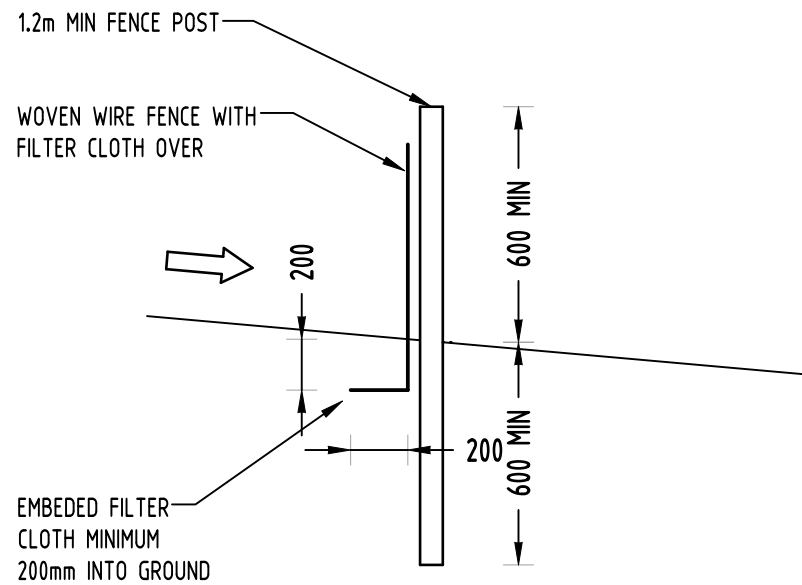
CLAY SOILS

A SYSTEM SHALL BE INSTALLED TO EITHER:

- TRANSPORT STORMWATER RUNOFF WITH SUSPENDED SOLIDS FROM SITE VIA PUMP TRUCKS.
- TREAT THE STORMWATER RUNOFF WITH SUSPENDED SOLIDS SO THE DISCHARGE WATER QUALITY TO COUNCIL STORMWATER DRAINAGE SYSTEM HAS A MAXIMUM CONCENTRATION OF SUSPENDED SOLIDS THAT DOES NOT EXCEED 50 MILLIGRAMS PER LITRE IN ACCORDANCE WITH THE PROTECTION OF THE ENVIRONMENT OPERATION ACT (POEO 1997) AND SHALL BE APPROVED BY LOCAL COUNCIL



DIAGRAMMATIC VIEW

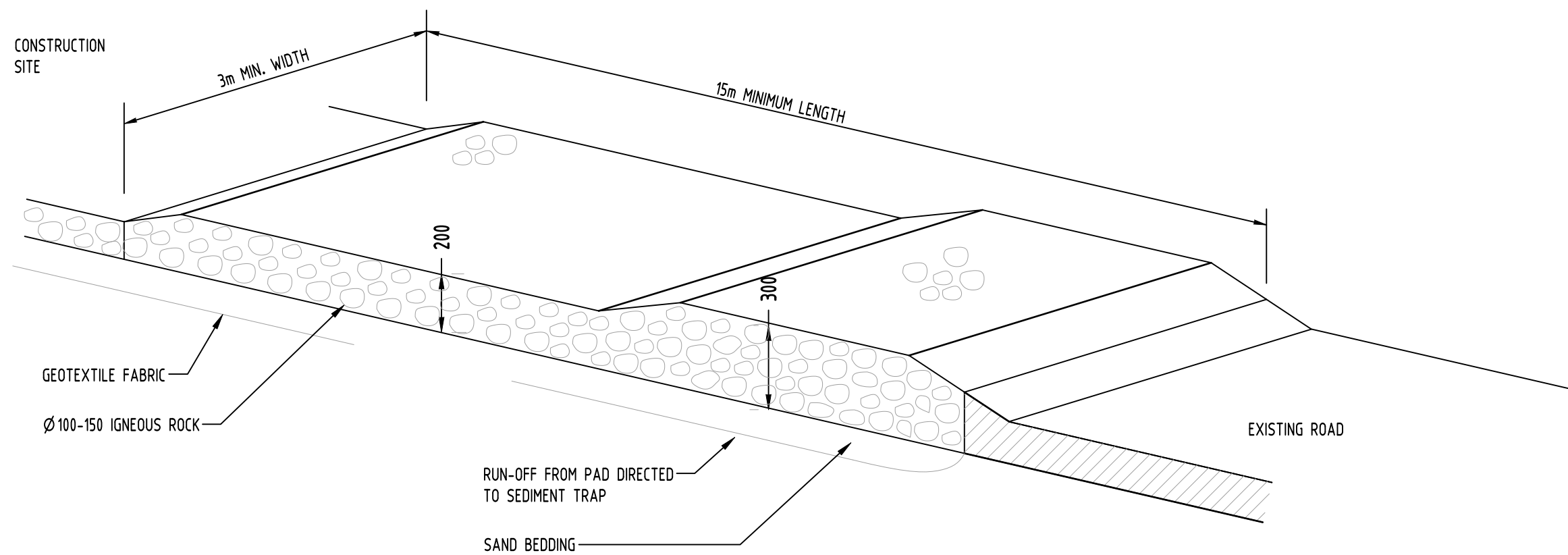


TYPICAL SECTION

SEDIMENT FENCE
NOT TO SCALE


GEOTEXTILE INLET FILTER

GEOTEXTILE INLET FILTER IS PLACED IN EVERY PIT WITHIN THE SITE TO ENSURE THE RUNOFF WATER DURING CONSTRUCTION NOT ENTER THE PITS.



TEMPORARY CONSTRUCTION EXIT
RUBBLE ALTERNATIVE
NOT TO SCALE


Reference Coordination Drawing				Revision History			
D	AMENDED AS PER COUNCIL'S COMMENTS	JO	27.07.2020	2	Discipline	Drawing Title and Number	Date
C	AMENDED AS PER COUNCIL'S COMMENTS	JO	09.07.2020	2	ARCH		
B	AMENDED AS PER COUNCIL'S COMMENTS	FZ	15.10.19	2	ARCH		
A	FOR APPROVAL	FZ	26.03.19	2	STRUCT		
P3	PRELIMINARY	FZ	22.03.19	1	MECH		
P2	PRELIMINARY	FZ	21.03.19	1	ELEC		
P1	PRELIMINARY	FZ	20.03.19	1	HYD		
Issue	Last revision title	by	Date	Status	FILE		
Issuer internal sequence and revision history							
1-preliminary	2-development application	3-construction certificate					
4-tender	5-construction	6-other					

ENGINEERS		QUALITY CONTROL		
	AUSTRALIA			
	Chartered Professional Engineer			
	MEMBER			
DRAWN	FZ	DATE	26.03.19	
CHECKED	SH	DATE	26.03.19	
DESIGNED	FZ	DATE	26.03.19	
VERIFIED	SH	DATE	26.03.19	
APPROVED	SH	DATE	26.03.19	

DIMENSIONS NOT SHOWN TO BE CHECKED ON SITE. DO NOT SCALE THE DRAWING.

POSITIONS OF AUTHORITIES MAINS AND/OR EXISTING SERVICES ARE TO BE CHECKED PRIOR TO COMMENCEMENT OF WORK. REPORT ANY DISCREPANCIES TO THE CONSULTING ENGINEER FOR DISCREPANCY INVESTIGATION BEFORE PROCEEDING WITH THE WORK. THIS DRAWING IS TO BE READ IN CONJUNCTION WITH THE SPECIFICATIONS AND OTHER CONSULTANT'S DRAWINGS.

WARNING: THE DESIGNS, DRAWINGS, SPECIFICATIONS AND THE COPYRIGHT HEREIN REMAIN THE SOLE INTELLECTUAL PROPERTY OF S&G CONSULTANTS PTY LTD AND MUST NOT BE USED, COPIED, ALTERED OR REPRODUCED WHOLLY OR IN PART IN ANY FORM WITHOUT THE WRITTEN CONSENT OF S&G CONSULTANTS PTY LTD



Scales

0m 40 80 120 160 200

SCALE 1:400 ON ORIGINAL SIZE

Reference Coordination Drawing				Revision History			
D	AMENDED AS PER COUNCIL'S COMMENTS	JO	27.07.2020	2	Discipline	Drawing Title and Number	Date
C	AMENDED AS PER COUNCIL'S COMMENTS	JO	09.07.2020	2	ARCH		
B	AMENDED AS PER COUNCIL'S COMMENTS	FZ	15.10.19	2	ARCH		
A	FOR APPROVAL	FZ	26.03.19	2	STRUCT		
P3	PRELIMINARY	FZ	22.03.19	1	MECH		
P2	PRELIMINARY	FZ	21.03.19	1	ELEC		
P1	PRELIMINARY	FZ	20.03.19	1	HYD		
Issue	Last revision title	by	Date	Status	FILE		
Issuer internal sequence and revision history							
1-preliminary	2-development application	3-construction certificate					
4-tender	5-construction	6-other					

ARCHITECT

URBANLINK PTY LTD

LEVEL 10, 11-15 DEANE ST,
BURWOOD NSW 2134

P.O.BOX 2223, BURWOOD NORTH
NSW 2134

p 02-9745 2014 f 02-9745 0984

e info@urbanlink.com.au

The logo for SGC Engineering Value. It features a blue square with the letters 'SGC' in white. Below the square, the words 'Engineering Value' are written in a green, sans-serif font.

Suite 5.03, Level 5,
156 PACIFIC HIGHWAY
ST. LEONARDS, NSW 2065
T: +61 2 8883 4239
Email: office@sgce.com.au
Web: www.sgce.com.au

A.B.N. 21 118 222 530

PROJECT			
PROPOSED RESIDENTIAL DEVELOPMENT			
12-16 FRANCIS STREET, MINTO			
Grid	Datum	Sheet	Scale (at original size)
-	A.H.D.	6 OF 7	AS SHOWN

Drawing Status	FOR APPROVAL		
NOT TO BE USED FOR CONSTRUCTION PURPOSES			
Drawing Title	EROSION AND SEDIMENT CONTROL PLAN AND DETAILS		
Project No	Drawing No	Revision No	
20180132	SW400	D	

CLIENT
AIMAN YOUSIF
AUSTRALIAN
CONSTRUCTION
EXPERTS PTY LTD.

ARCHITECT
URBAN LINK PTY LTD
LEVEL 10, 11-15 DEANE ST,
BURWOOD NSW 2134
P.O.BOX 2223, BURWOOD NORTH
NSW 2134
P 02-9745 2014 F 02-9745 0984
E info@urbanlink.com.au



Suite 5.03, Level 5,
156 PACIFIC HIGHWAY
ST. LEONARDS, NSW 2065
T: +61 2 8883 4239
Email: office@sgce.com.au
Web: www.sgce.com.au

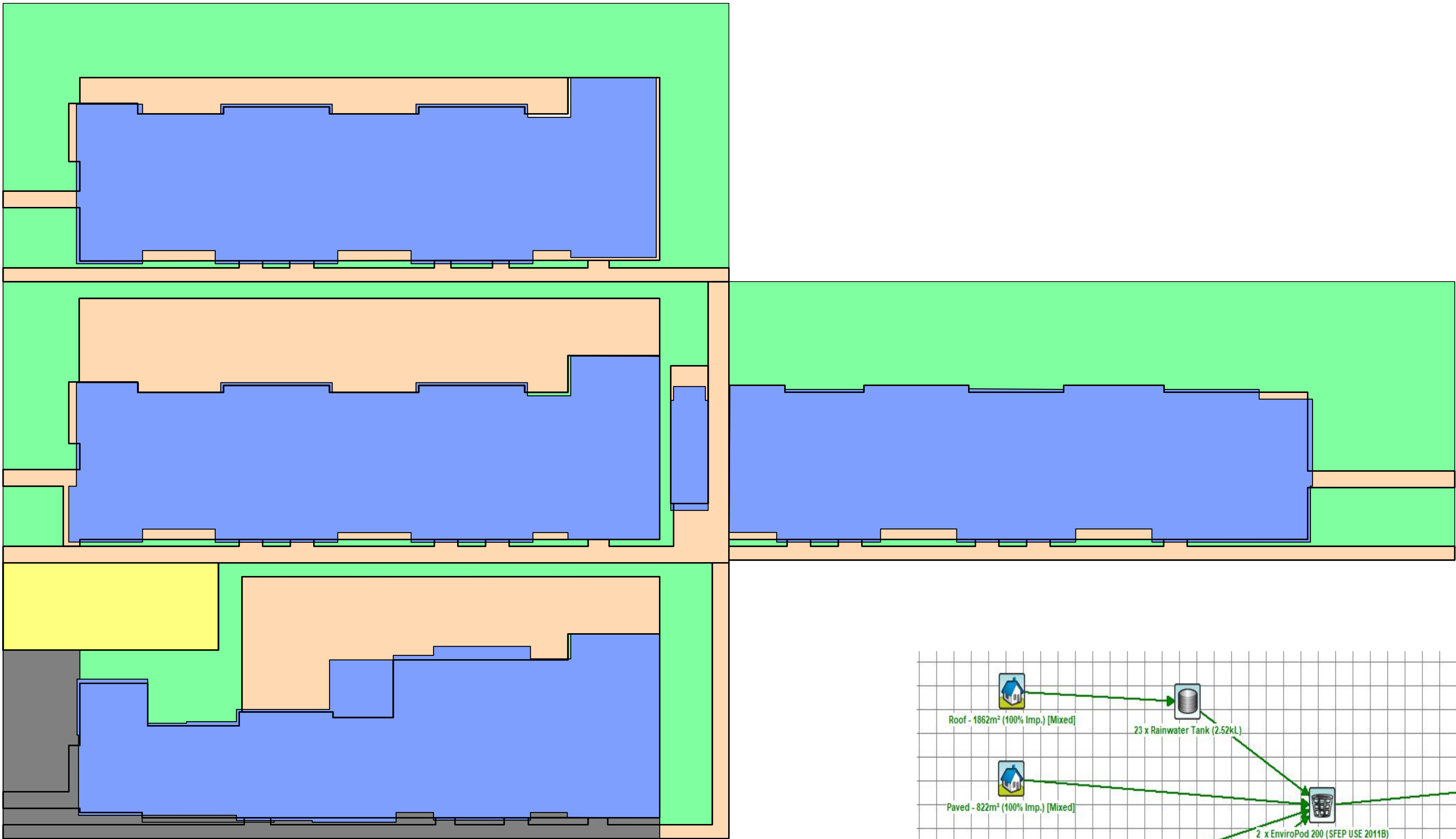
A.B.N. 21 118 222 530

PROJECT
PROPOSED RESIDENTIAL
DEVELOPMENT
12-16 FRANCIS STREET,
MINTO

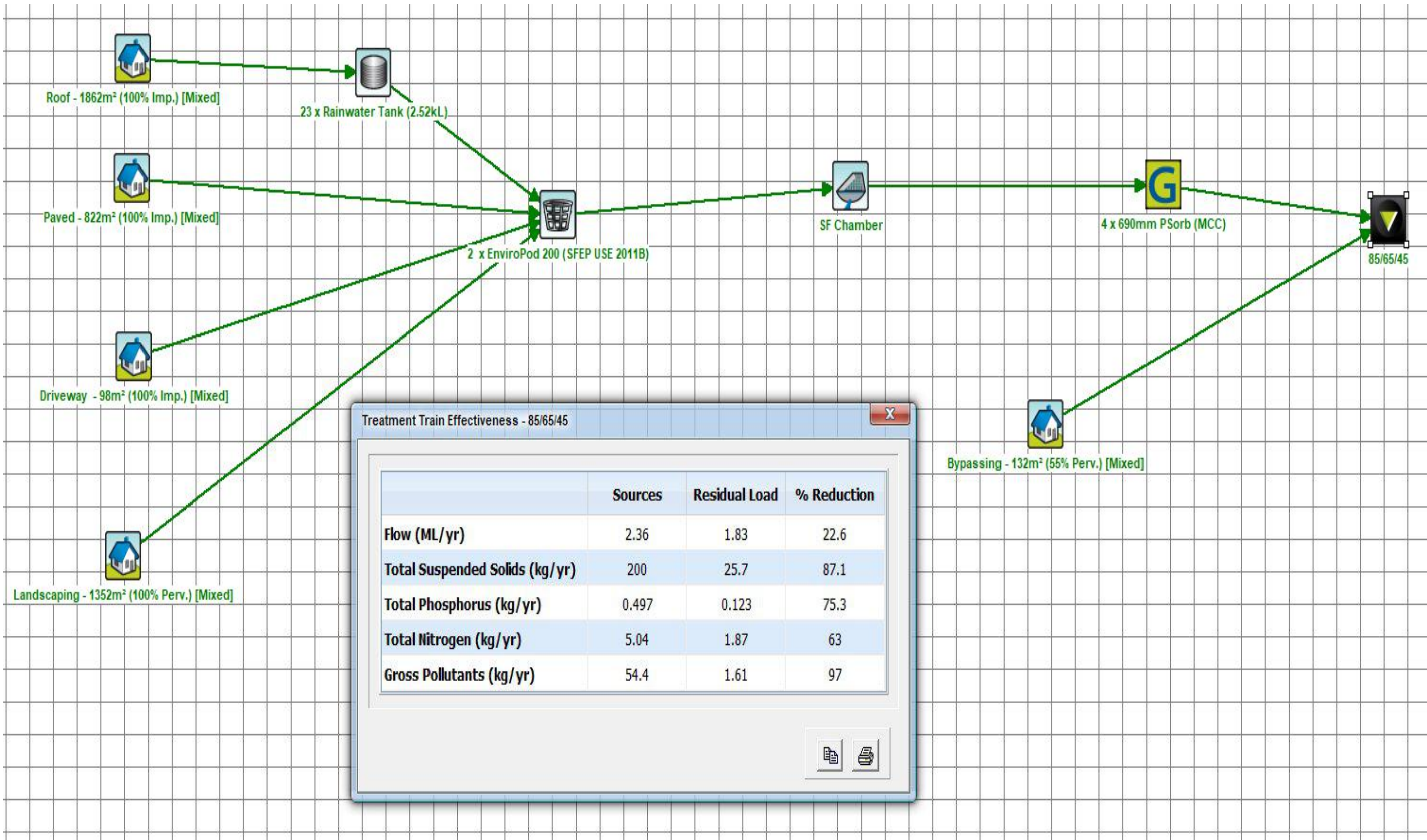
Grid	Datum	Sheet	Scale (at original size)
-	A.H.D.	6 OF 7	AS SHOWN

Drawing Status	FOR APPROVAL		
NOT TO BE USED FOR CONSTRUCTION PURPOSES			
Drawing Title	Drawing No		
EROSION AND SEDIMENT CONTROL PLAN AND DETAILS			
Project No	Drawing No	Revision No	
20180132	SW400	D	

SERVICES ON THIS DRAWING
ARE SHOWN BELOW SLAB U.N.O



- LANDSCAPING AREA (1352m², 100% PERVIOUS)
- DRIVEWAY (98m², 100% IMPERVIOUS)
- ROOF AREA (1862m², 100% IMPERVIOUS)
- PAVED AREA (822m², 100% IMPERVIOUS)
- BYPASSED AREA (132m², 55% PERVIOUS)



				Reference Coordination Drawing			
D	AMENDED AS PER COUNCIL'S COMMENTS	JD	27.07.2020	2	Discipline	Drawing Title and Number	Date
C	AMENDED AS PER COUNCIL'S COMMENTS	JD	09.07.2020	2	ARCH		
B	AMENDED AS PER COUNCIL'S COMMENTS	FZ	15.10.19	2	ARCH		
A	FOR APPROVAL	FZ	26.03.19	2	STRUCT		
P3	PRELIMINARY	FZ	22.03.19	1	MECH		
P2	PRELIMINARY	FZ	21.03.19	1	ELEC		
P1	PRELIMINARY	FZ	20.03.19	1	HYD		
Issue	Last revision title	by	Date	Status	FIRE		

Issue internal sequence and revision history

1-preliminary

4-tender

2-development application

5-construction

3-construction certificate

6-other

ENGINEERS AUSTRALIA
Chartered Professional Engineer
MEMBER

QUALITY CONTROL

DRAWN FZ DATE 26.03.19

CHECKED SH DATE 26.03.19

DESIGNED FZ DATE 26.03.19

VERIFIED SH DATE 26.03.19

APPROVED SH DATE 26.03.19

LANDS CIVIL SURVEY

DISCLAIMER

WARNING: THE DESIGNS, DRAWINGS, SPECIFICATIONS AND THE COPYRIGHT HEREIN REMAIN THE SOLE INTELLECTUAL PROPERTY OF S&G CONSULTANTS PTY LTD AND MUST NOT BE USED, COPIED, ALTERED OR REPRODUCED WHOLLY OR IN PART IN ANY FORM WITHOUT THE WRITTEN CONSENT OF S&G CONSULTANTS PTY LTD

0m 2 4 6 8 10

SCALE 1:200 ON ORIGINAL SIZE

CLIENT

AIMAN YOUSIF

AUSTRALIAN

CONSTRUCTION

EXPERTS PTY LTD.

ARCHITECT

URBAN LINK

PTY LTD

LEVEL 10, 11-15 DEANE ST,
BURWOOD NSW 2134
P.O.BOX 2223, BURWOOD NORTH
NSW 2134
P 02-9745 2014 F 02-9745 0984
E info@urbanlink.com.au

SGC

Engineering Value

A.B.N. 21 118 222 530

PROJECT

PROPOSED RESIDENTIAL

DEVELOPMENT

12-16 FRANCIS STREET,
MINTO

Grid

Datum

Sheet

Scale (at original size)

-

A.H.D.

7 OF 7

1200 @ A1

Drawing Status

FOR APPROVAL

NOT TO BE USED FOR CONSTRUCTION PURPOSES

Drawing Title

STORMWATER CONCEPT DESIGN

MUSIC CATCHMENT PLAN

Project No

20180132

Drawing No

SW500

Revision No

D